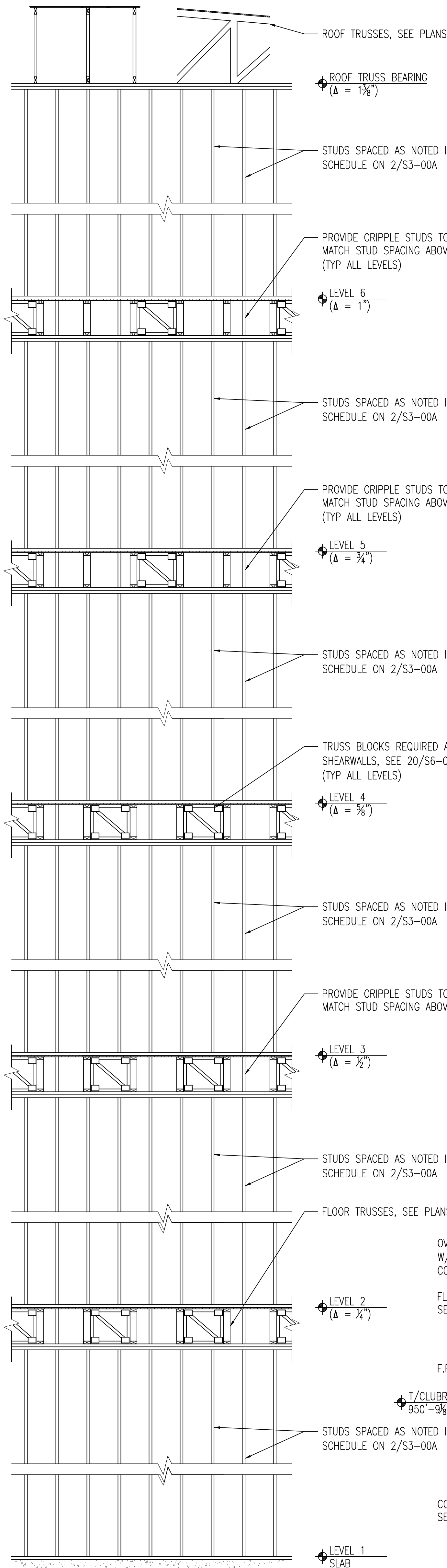
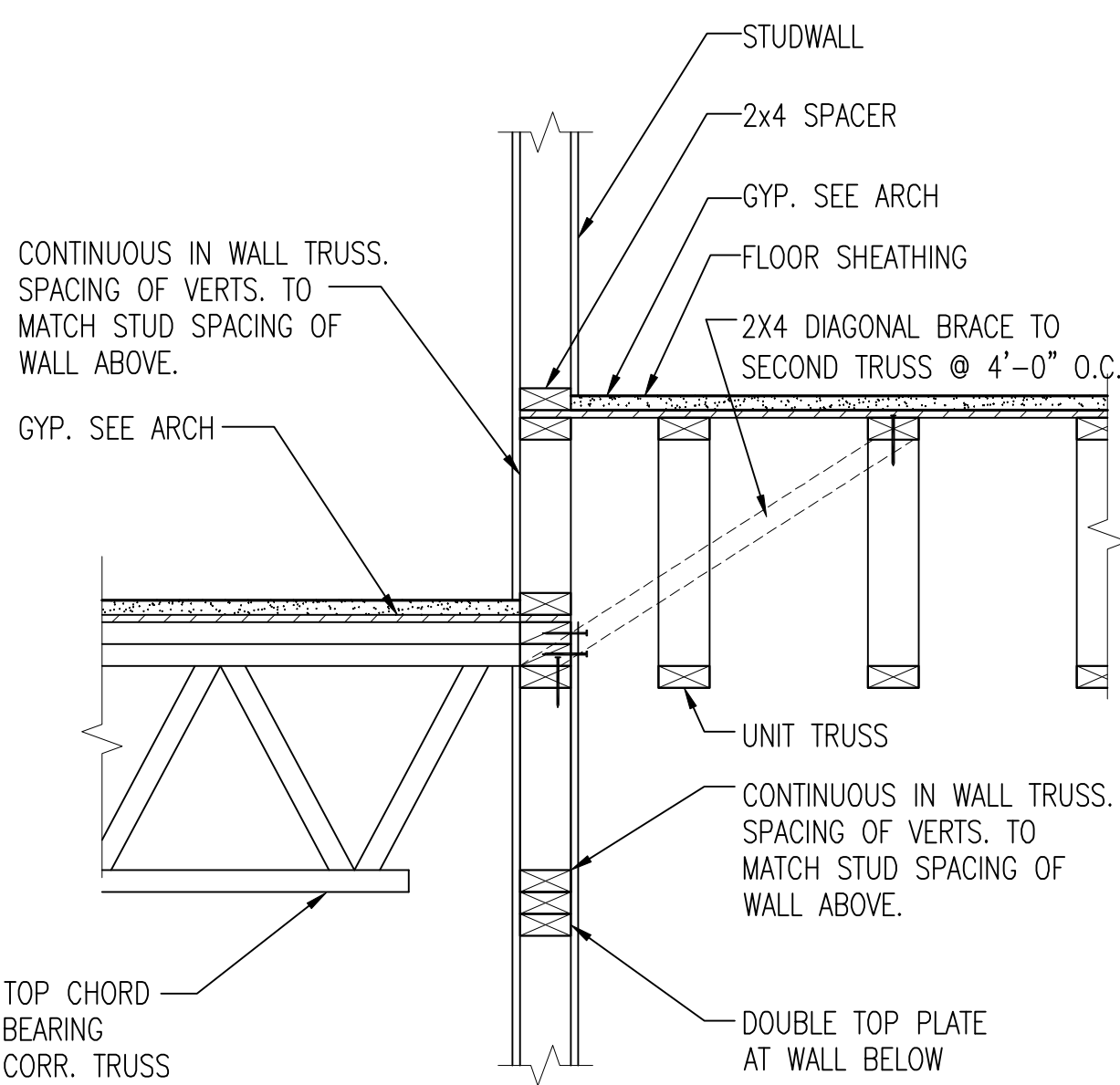


**G.C. TO INSTALL NON-STRUCTURAL BUILDING COMPONENTS WITH TOLERANCE TO ALLOW FOR THE DEFLECTIONS (Δ) SHOWN BELOW WHICH REPRESENT TOTAL MOVEMENT OF EACH STORY RELATIVE TO IT'S F.F.E. AFTER SHRINKAGE AND COMPRESSION HAVE OCCURRED.

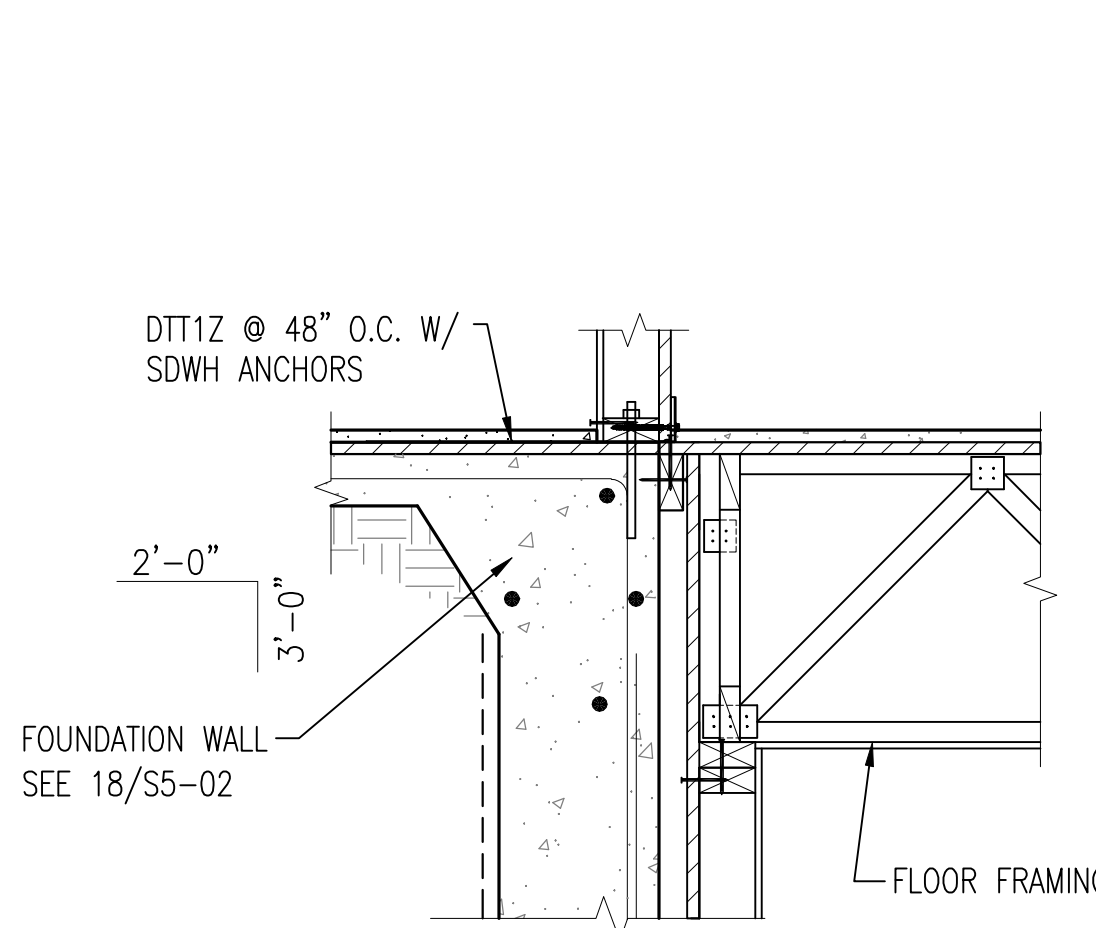


20 BUILDING SHRINKAGE ESTIMATES
S6-02 SCALE: 3/8" = 1'-0"

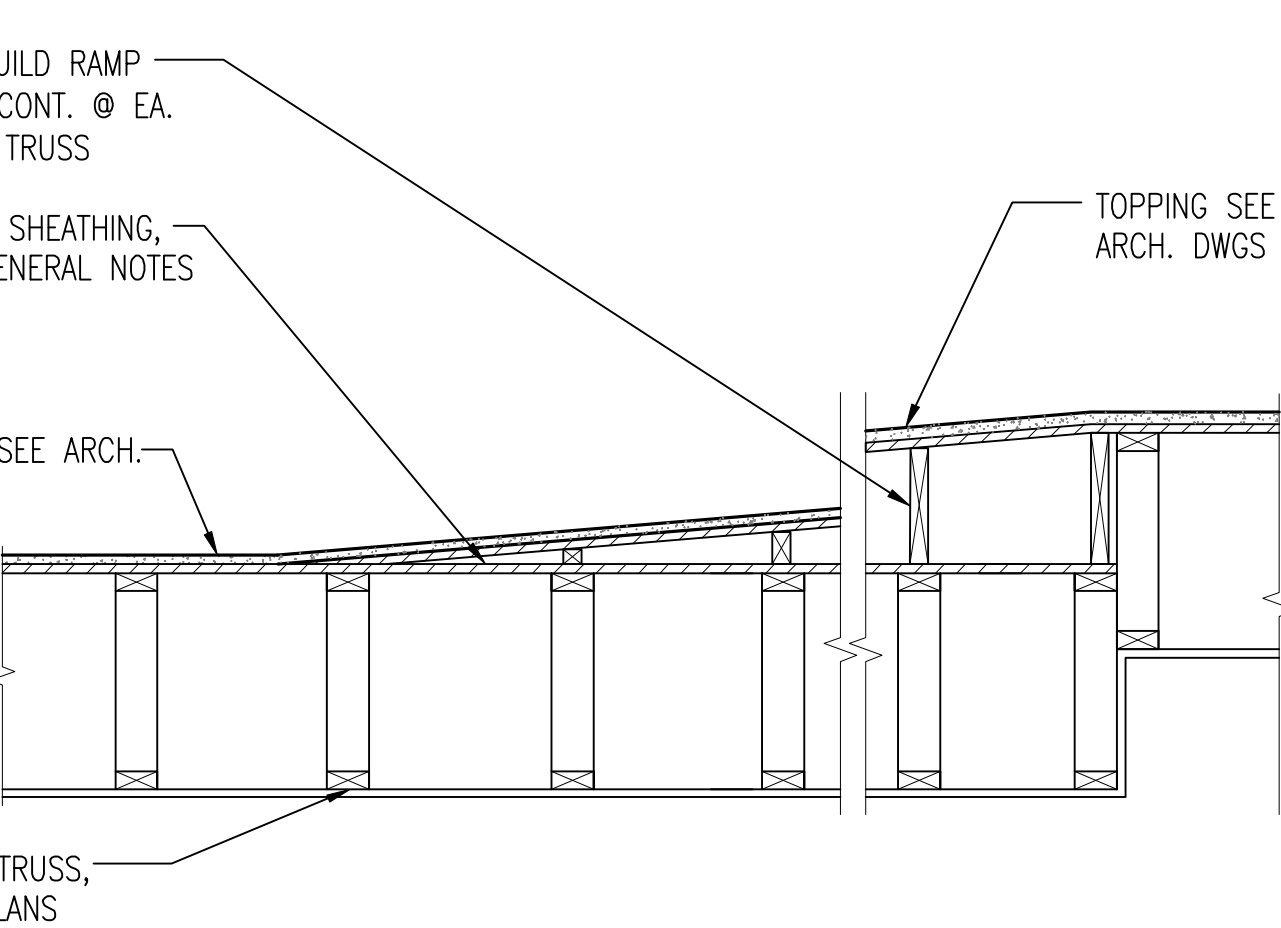
13 BRICK VENEER ANCHOR DETAIL
S6-02 SCALE: 1" = 1'-0"



14 SECTION AT CORRIDOR STEP
S6-02 SCALE: 1" = 1'-0"

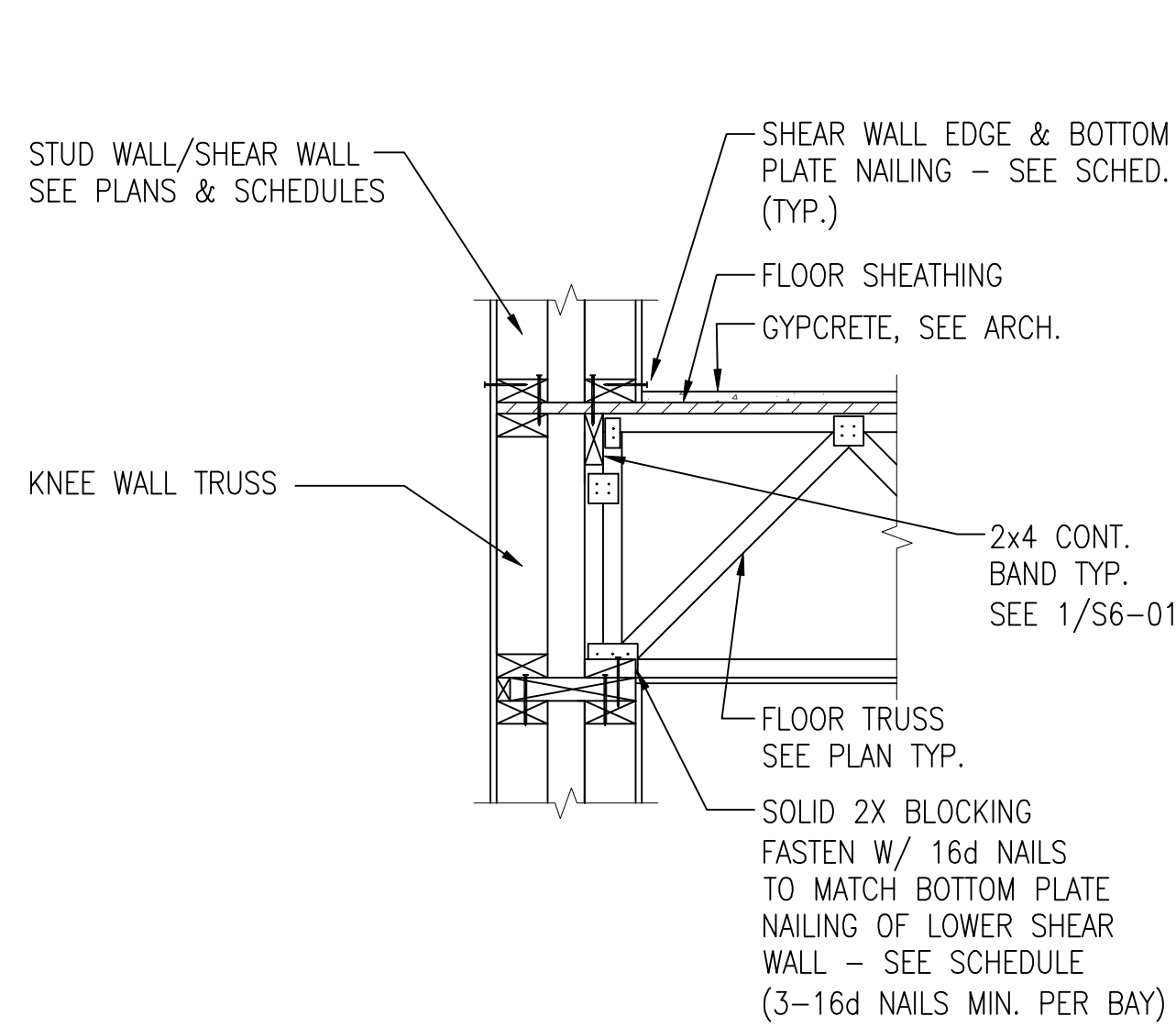


15 SECTION AT DRIVE UNDER LATERAL STRAP CONNX
S6-02 SCALE: 1" = 1'-0"

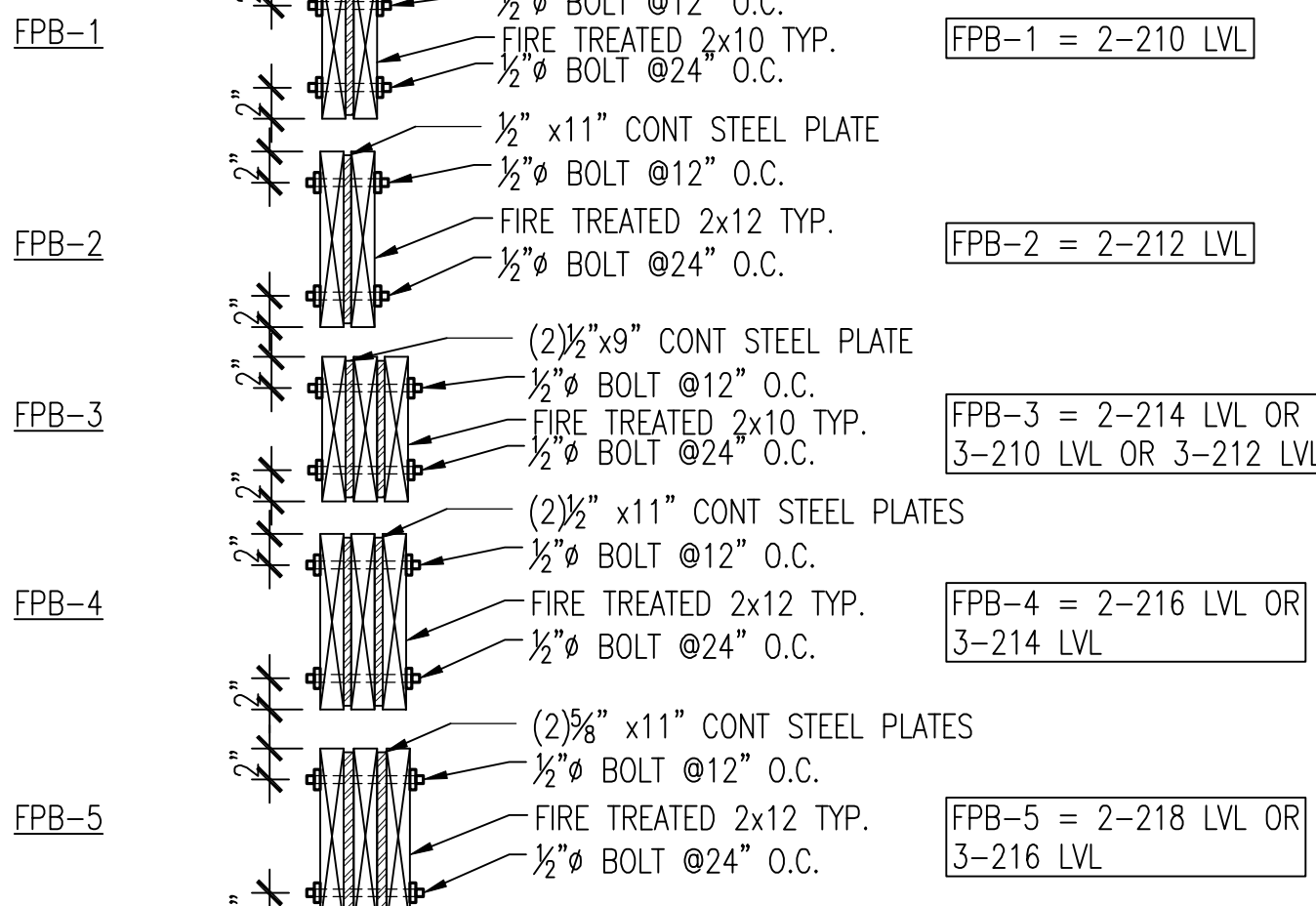


16 SECTION AT RAMP OVERBUILD
S6-02 SCALE: 3/4" = 1'-0"

9 ALLOWABLE SLOTTED MEP PENETRATION
S6-02 SCALE: 1-1/2" = 1'-0"

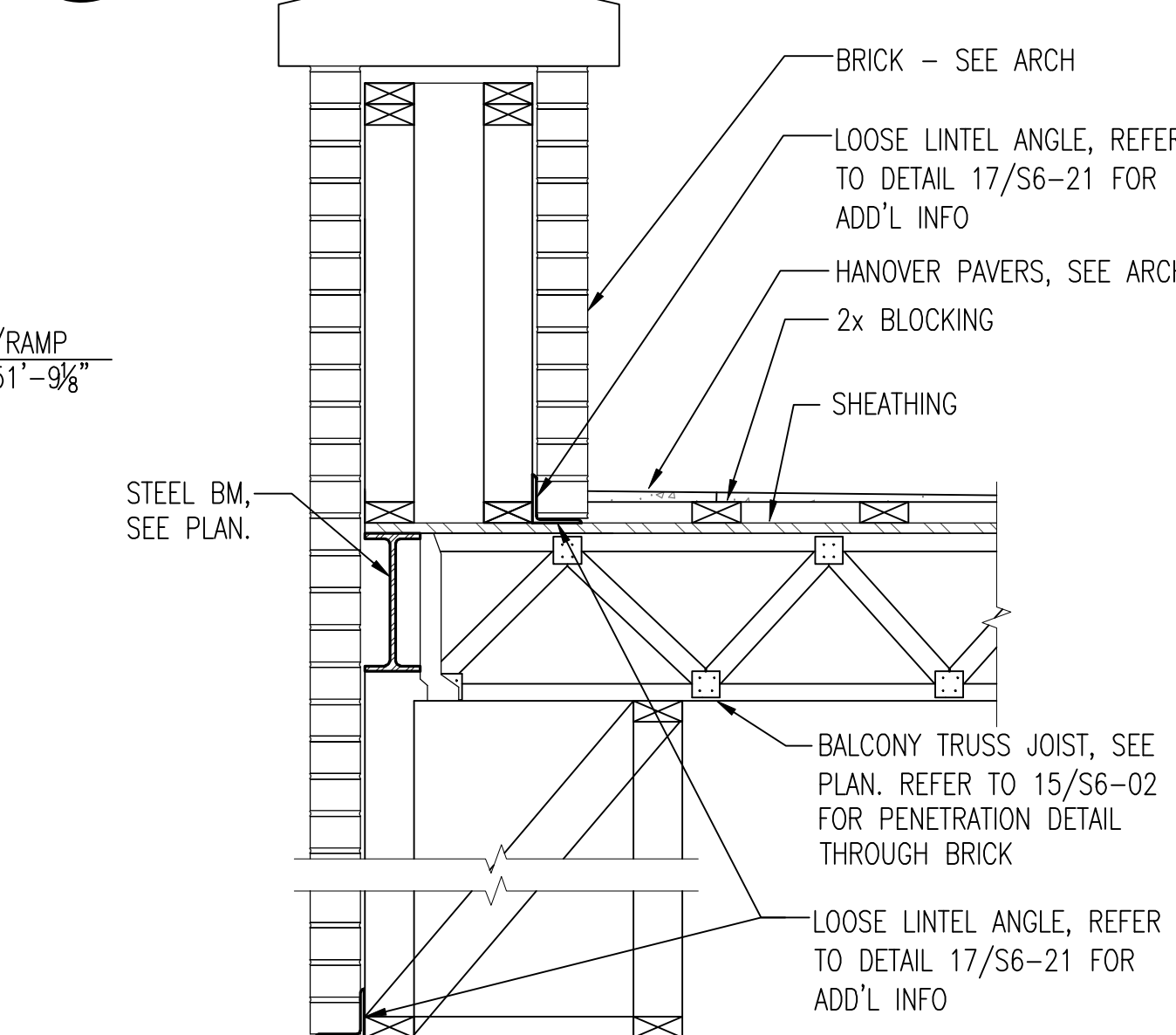


10 SECTION AT TENANT SEPARATION WALL
S6-02 SCALE: 1" = 1'-0"



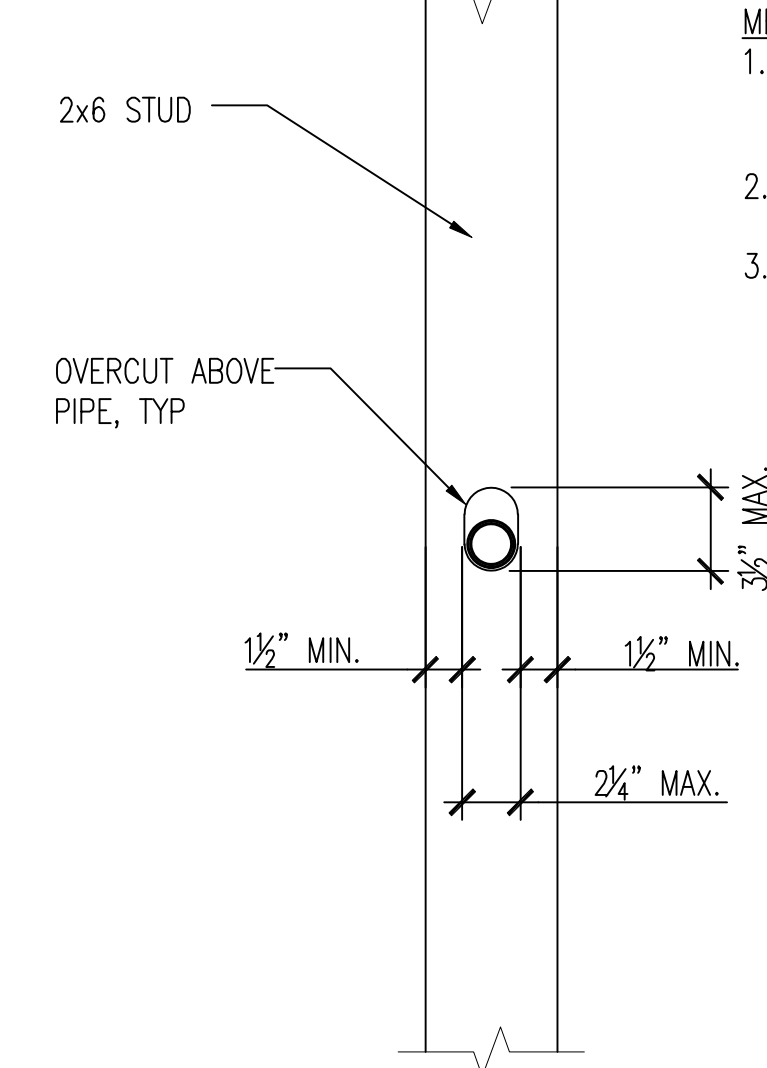
NOTES:
1. PLACE FIRST BOLTS AT 2" FROM BEAM END.
2. PROVIDE (4) BOLTS @ EA END OF BEAMS @ 4" O.C.
3. AT CANTILEVERED BEAMS TOP AND BOTTOM BOLT SPACING SHALL BE @ 12" O.C.
4. ALL LVL'S REQUIRING FIRE TREATMENT TO BE REPLACED WITH FPB'S PER CONVERSIONS ABOVE

11 SECTION @ FLITCH PLATE BEAM (F.P.B.)
S6-02 SCALE: 1" = 1'-0"

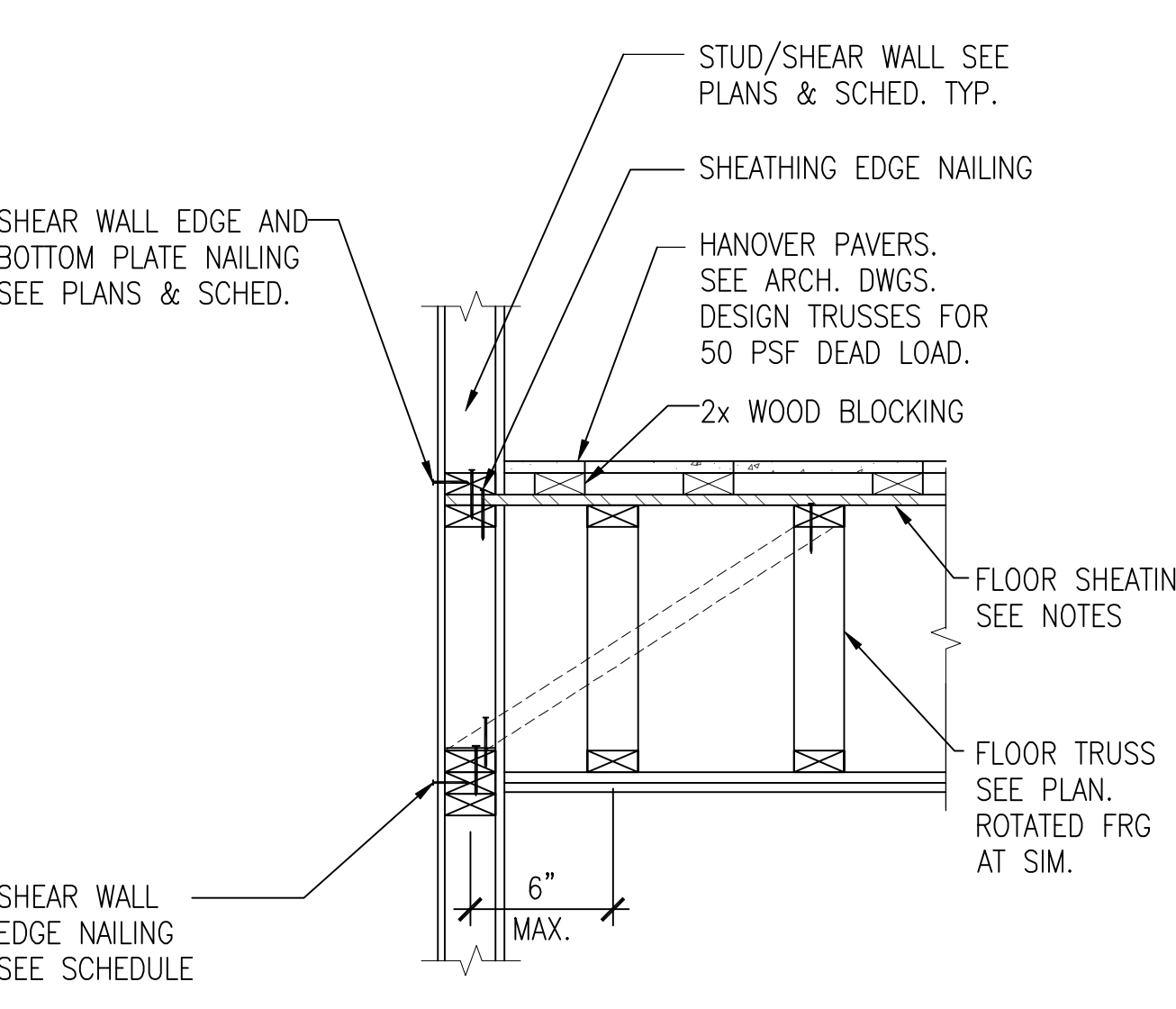


12 SECTION AT BALCONY OVER AMENITY
S6-02 SCALE: 1" = 1'-0"

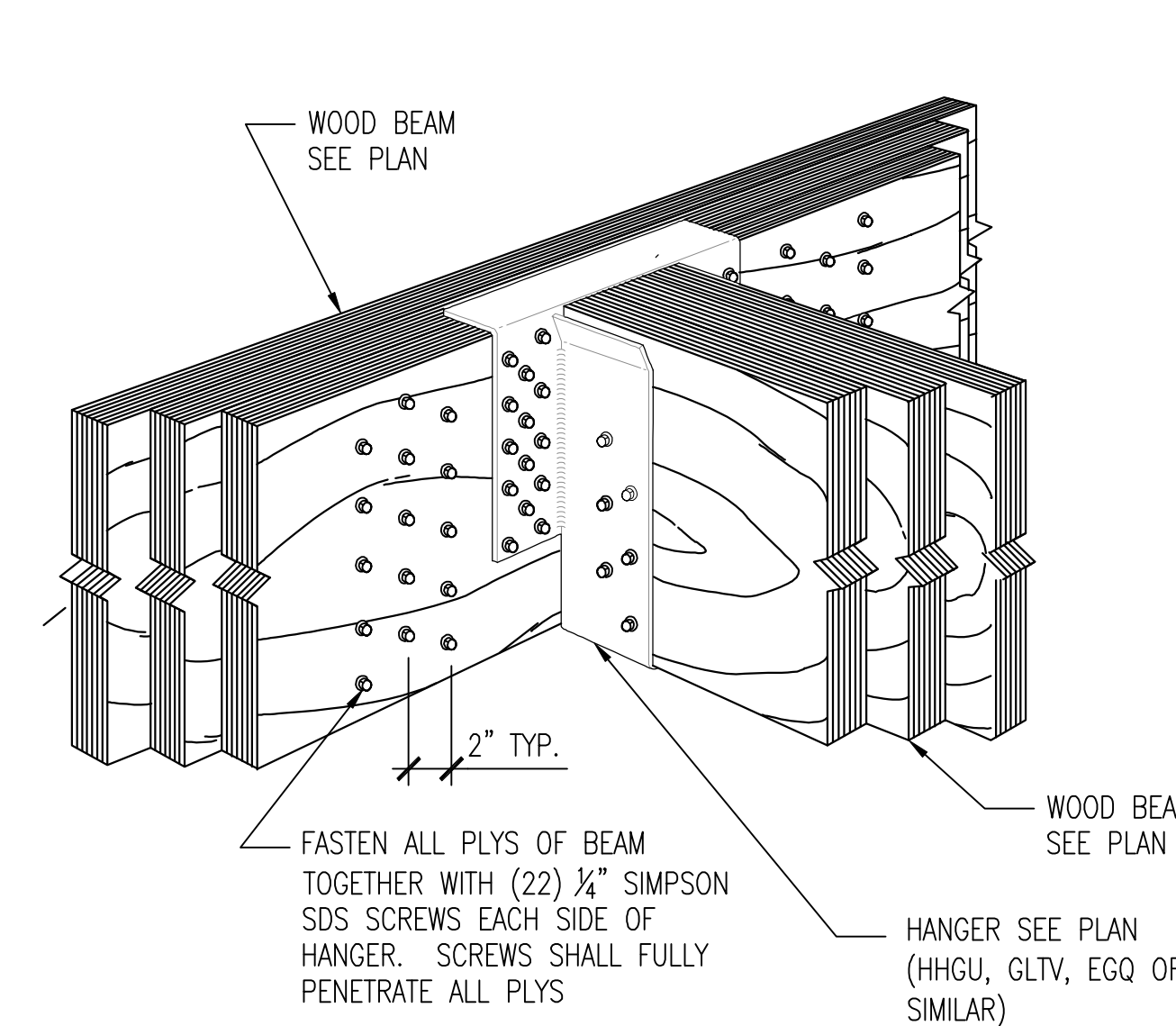
MEP PENETRATION NOTES:
1. OVERCUT PENETRATIONS ABOVE PIPES IN ACCORDANCE WITH ESTIMATED SHRINKAGES SHOWN ON 3/S3-00B
2. PENETRATIONS NOT PERMITTED THROUGH 2X4 STUDS
3. PENETRATIONS SHALL BE CENTERED IN STUDS AND TOP/BOTTOM PLATES



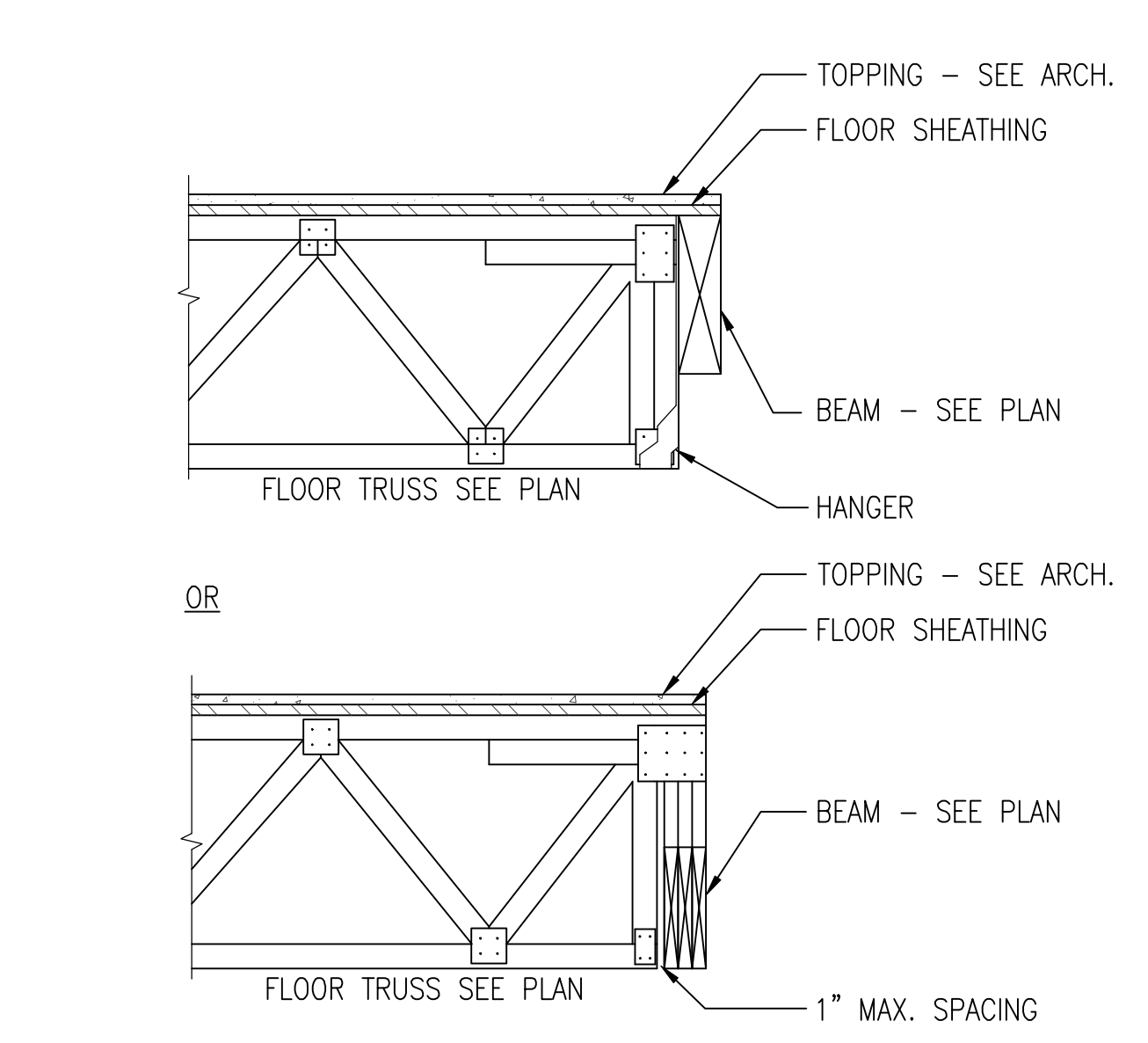
5 BEAM TO POST CONNECTION DETAIL AT BALCONY
S6-02 SCALE: 1" = 1' TYPICAL DETAIL



6 SECTION AT TERRACE LEVEL FRAMING
S6-02 SCALE: 1" = 1'-0"

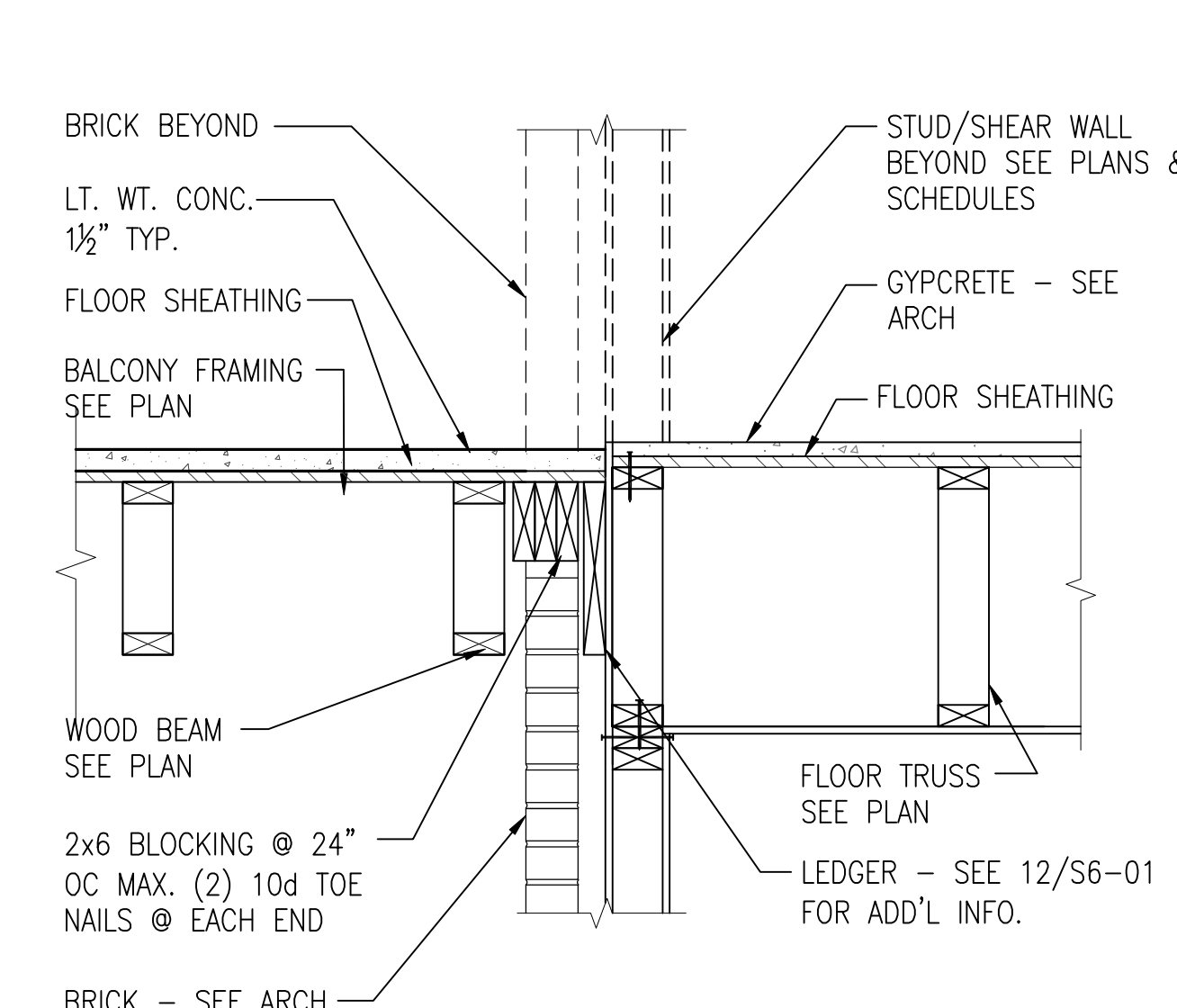


7 DETAIL AT HIGH CAPACITY HANGERS (TYP)
S6-02 SCALE: 1/2" = 1'-0"

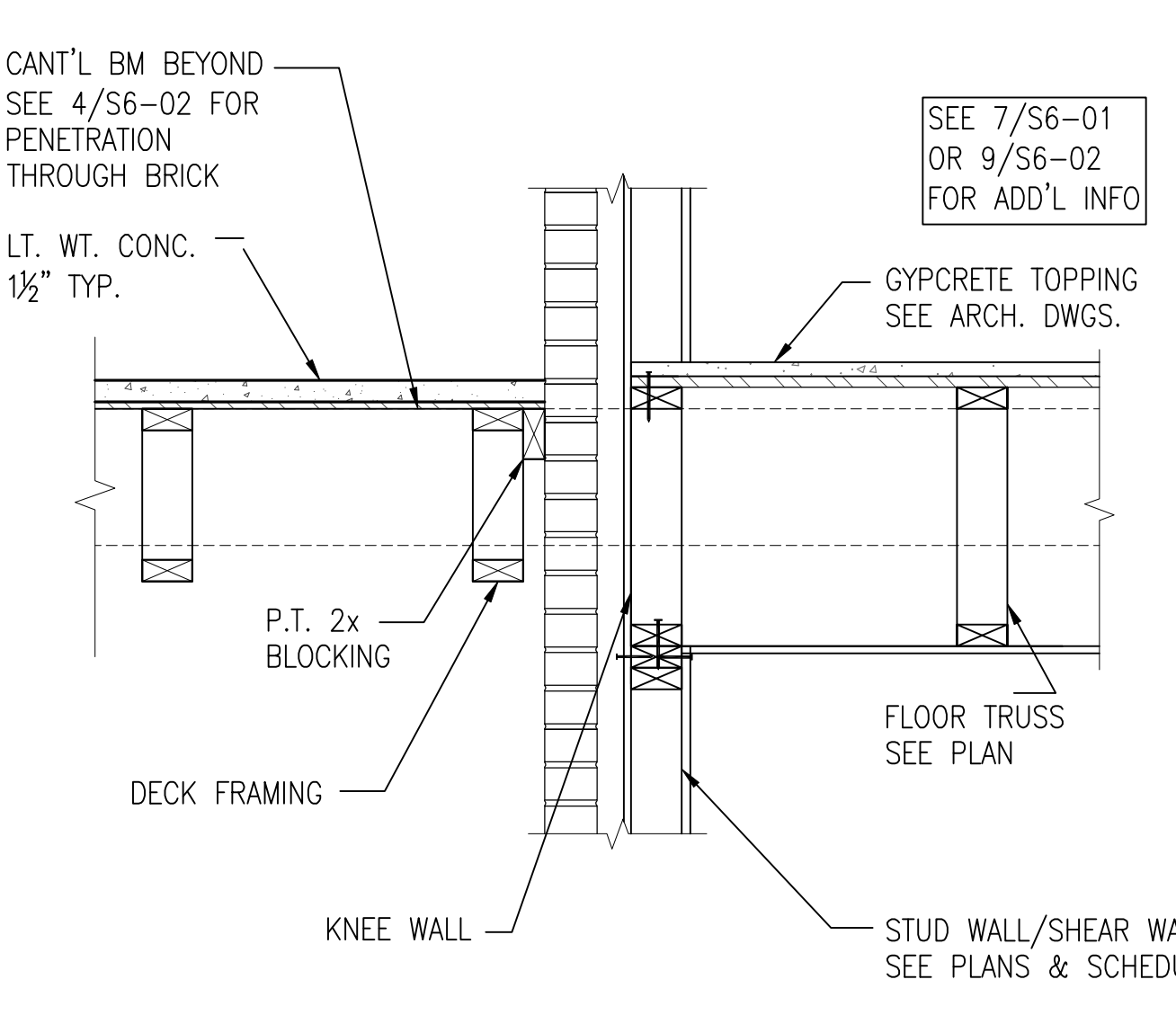


8 SECTION AT FLUSH BEAM
S6-02 SCALE: 1" = 1'-0"

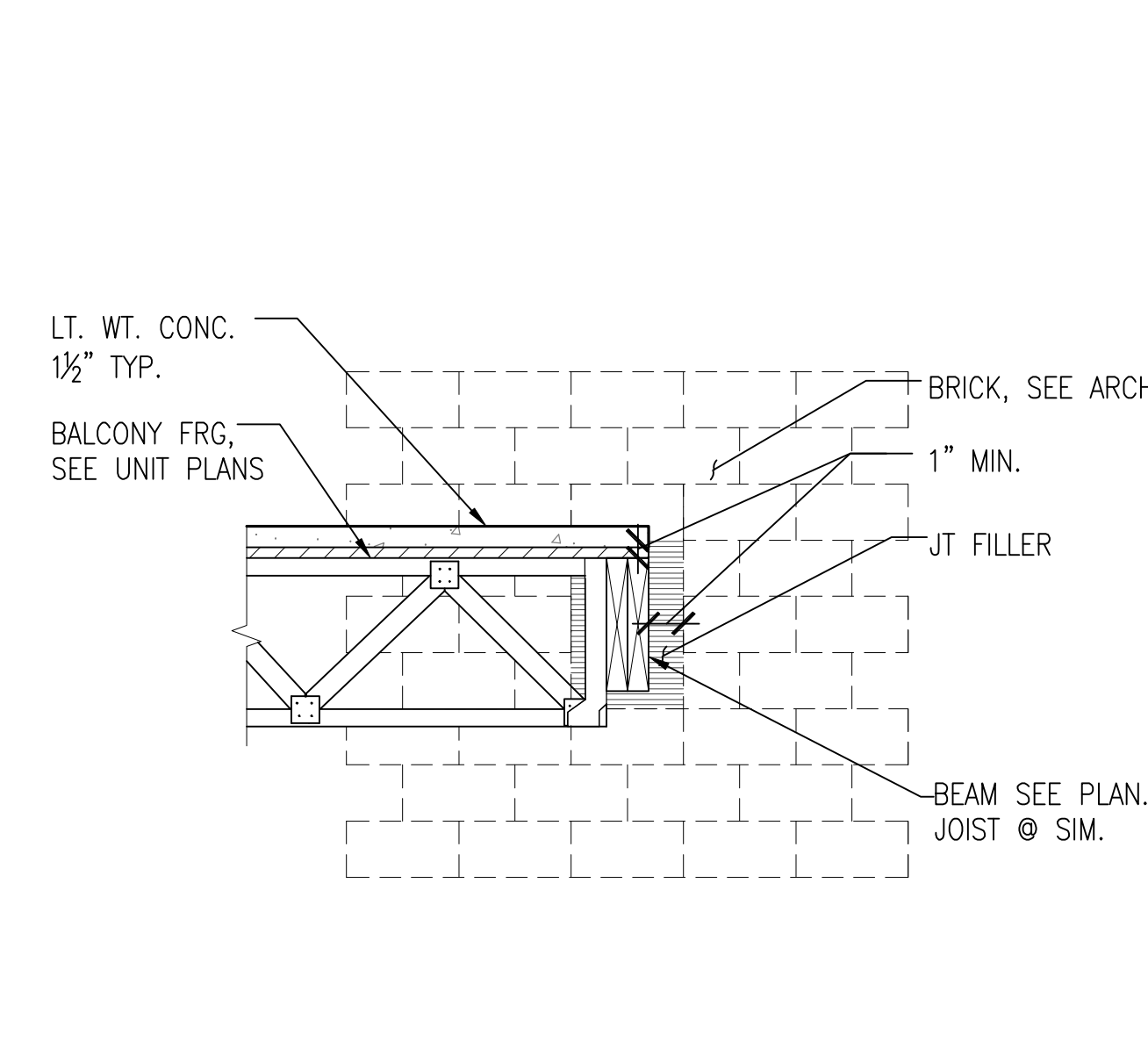
1 NON-LOAD BEARING SHEAR WALL
S6-02 SCALE: 1" = 1'-0"



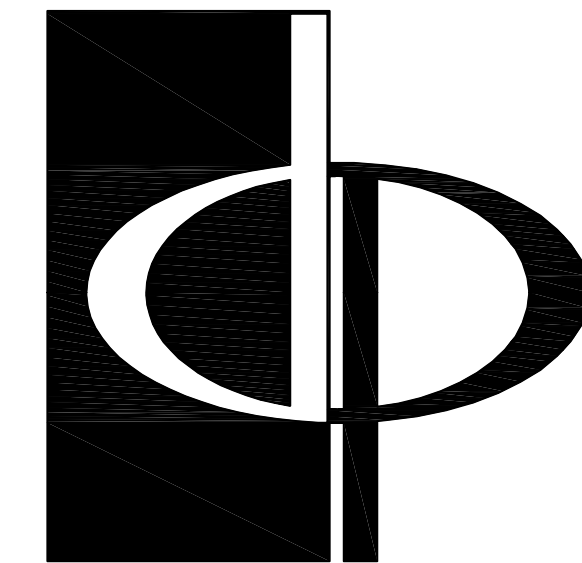
2 FLOOR FRAMING AT BALCONY WITH BRICK @ OPENING
S6-02 SCALE: 1" = 1'-0"



3 FLOOR FRAMING AT BALCONY WITH CONTINUOUS BRICK
S6-02 SCALE: 1" = 1'-0"



4 SECTION AT CANT'L BEAM THROUGH BRICK
S6-02 SCALE: 1" = 1'-0"



THE PRESTON PARTNERSHIP, LLC
A MULTI-DISCIPLINARY DESIGN FIRM

SOUTH TERRACES
115 PERIMETER CENTER PLACE, SUITE 950
ATLANTA, GEORGIA 30346
TELEPHONE: 770.396.7248
FAX: 770.396.9845

WWW.THEPRESTONPARTNERSHIP.COM
CONSULTANT



887 West Marietta St. NW
Suite T103
Atlanta, GA 30318
www.m2structural.com
404-829-2612

SEAL



PROJECT
REVEL AT THE BALLPARK
2885 CRESCENT PKWY
SMYRNA, GA 30080

FOR



ATLANTIC REALTY PARTNERS

3438 PEACHTREE ROAD, SUITE 1425
ATLANTA, GA 30326
404-591-2900

△ ISSUE DATE

SCHEMATIC DESIGN SET	08/28/2015
DD PROGRESS SET	10/07/2015
DD/IMP	10/15/2015
FOUNDATION PERMIT	12/07/2015
75% CDs	01/28/2016
GMP SET	04/03/2017
PERMIT SET	05/22/2017

DATE 05/22/2017

JOB NUMBER 1493101

DRAWN BY CTK

CHECKED BY JWS

SHEET TITLE FRAMING DETAILS

SHEET NUMBER

S6-02

COMMENTS RELEASED FOR CONSTRUCTION