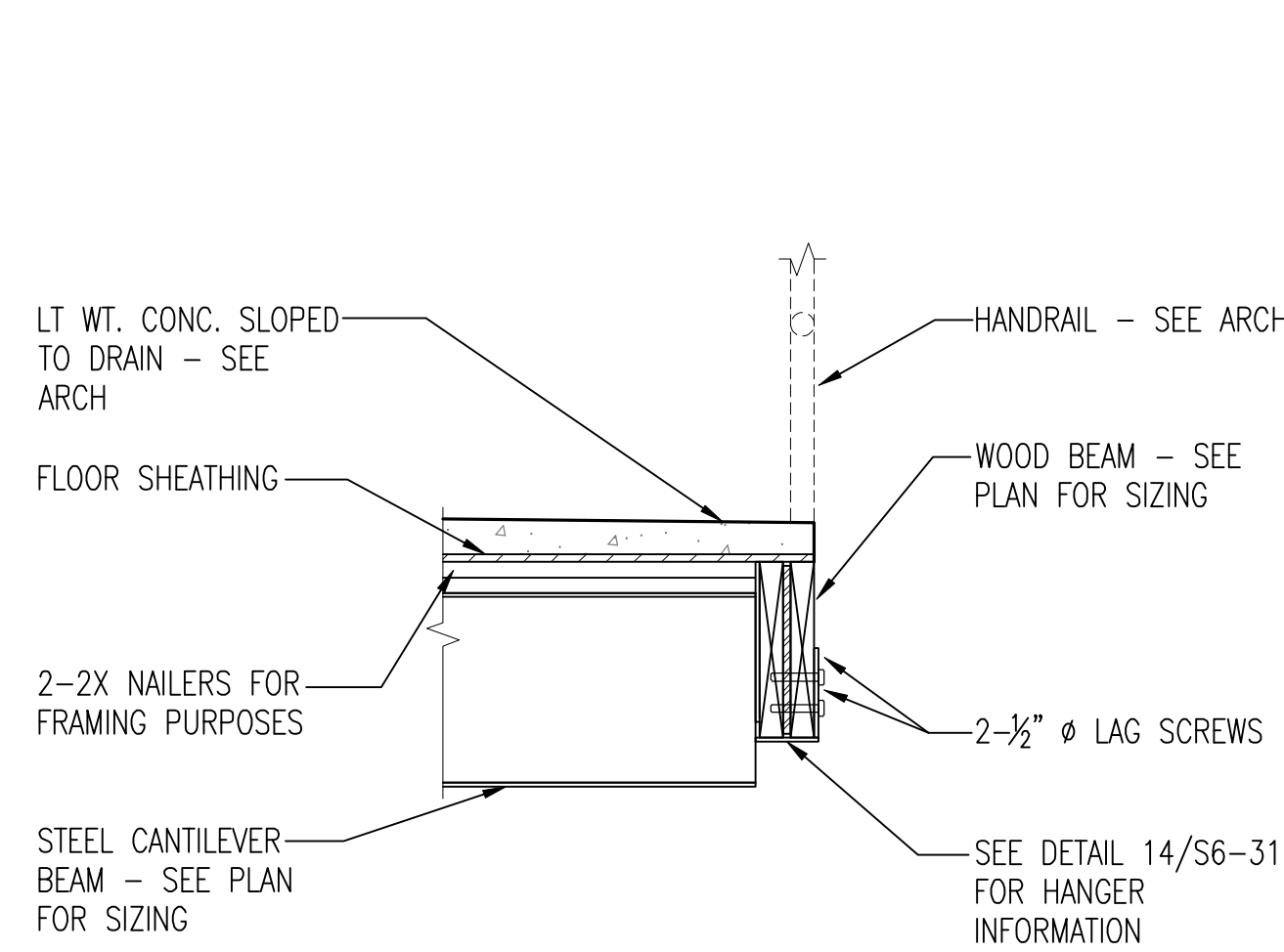
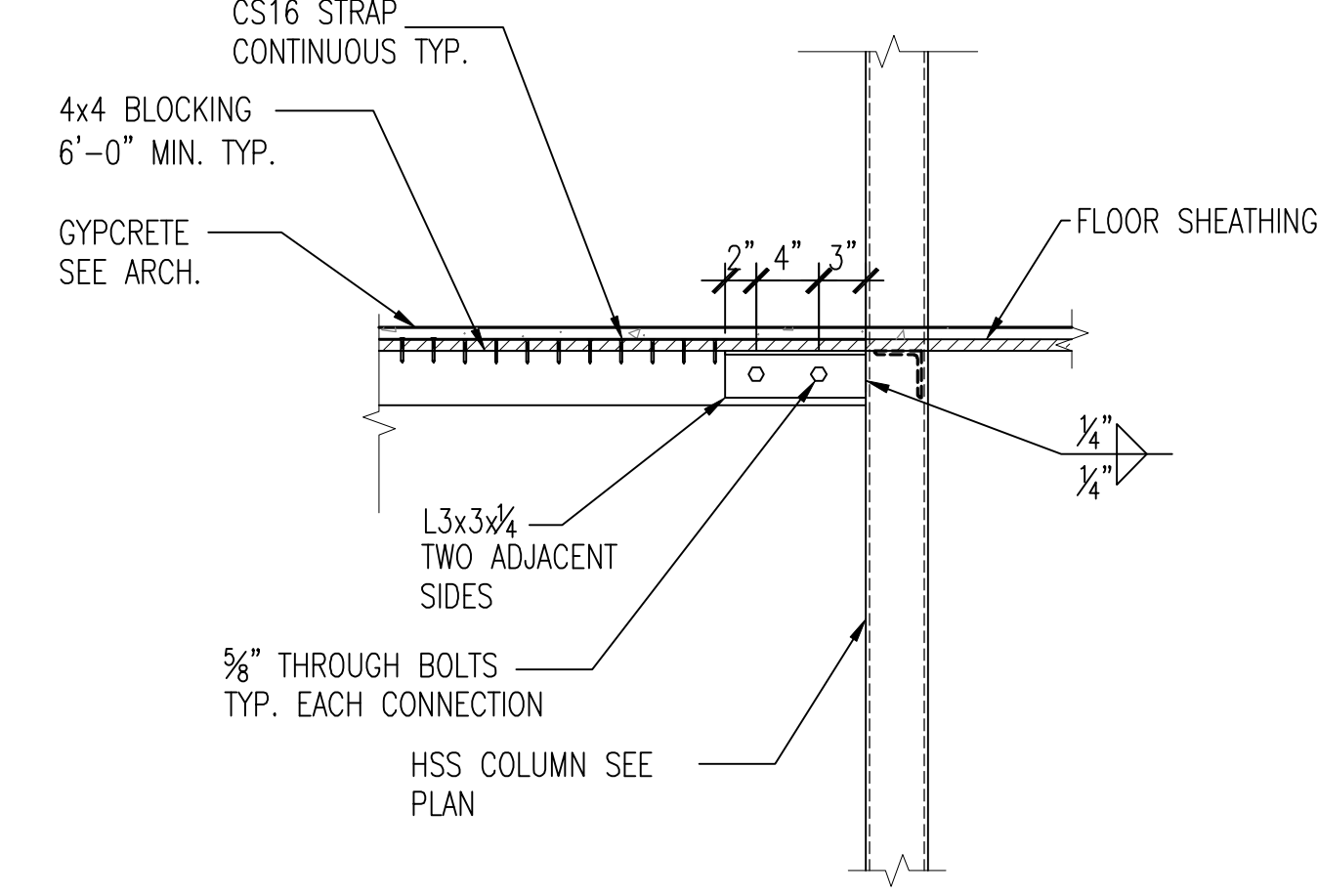


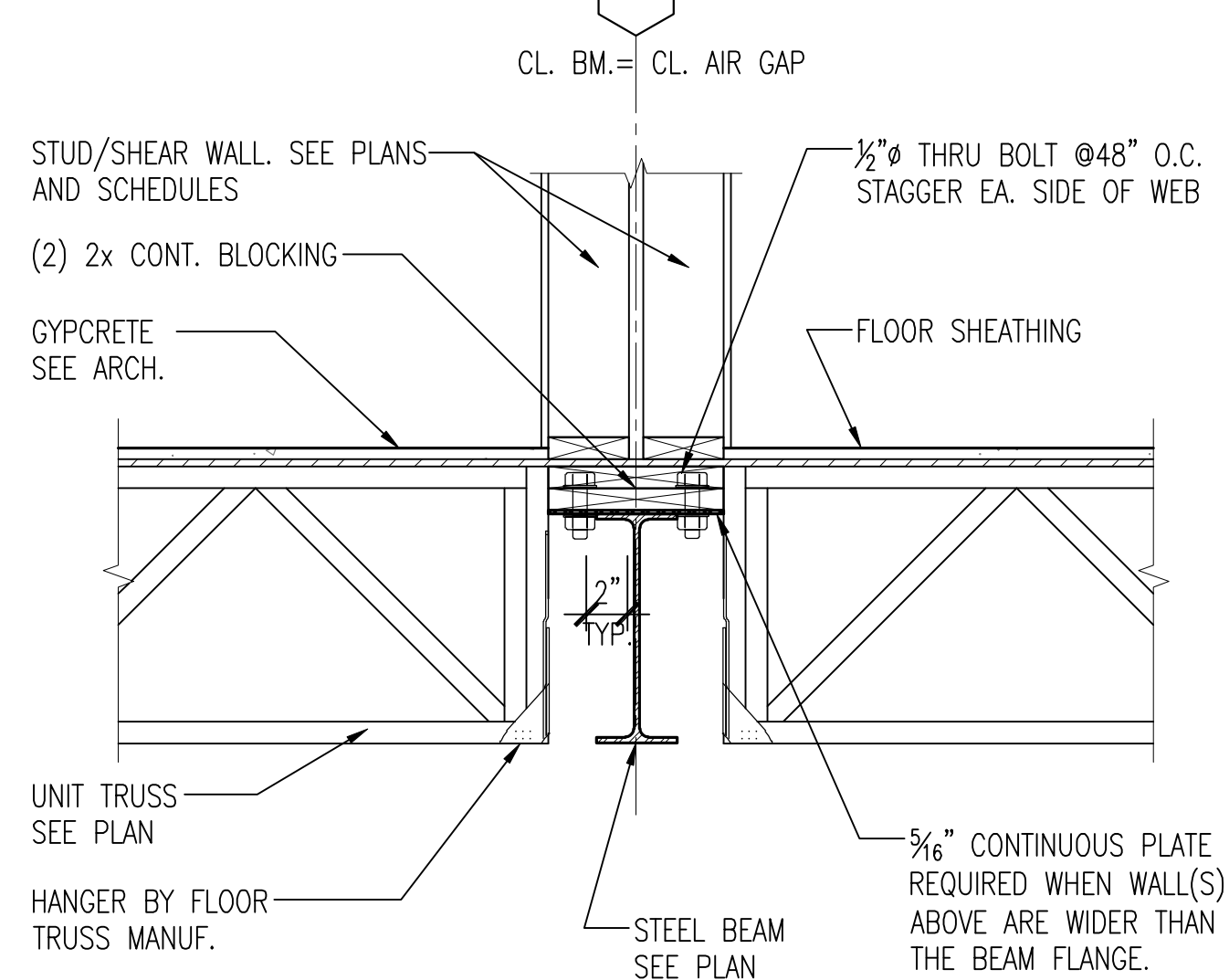
17 MOMENT CONNECTION @ DRIVE UNDER
S6-31 SCALE: 1" = 1'-0"



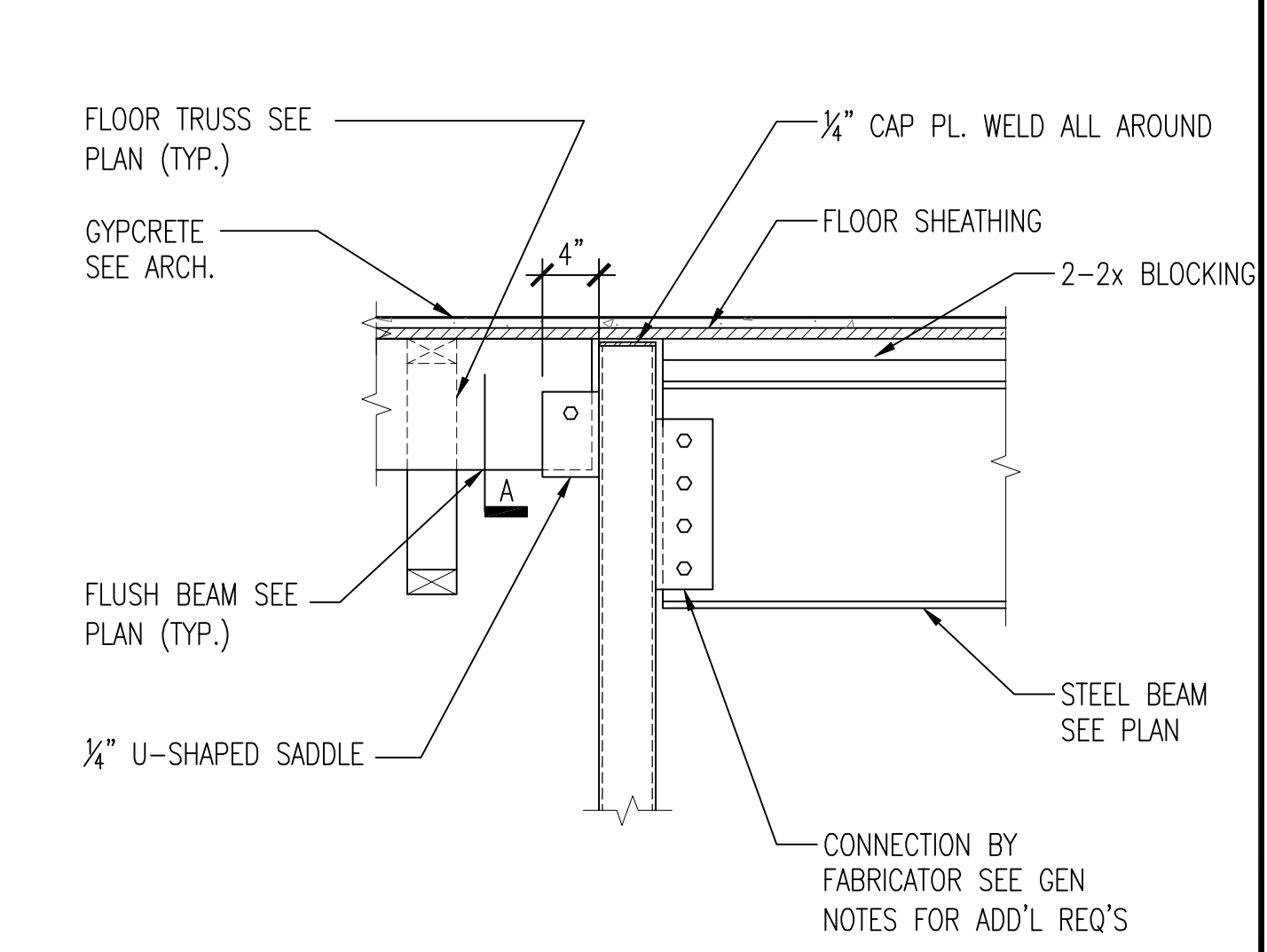
13 SECTION AT CORNER BALCONY BEAM
S6-31 SCALE: 1" = 1'-0"



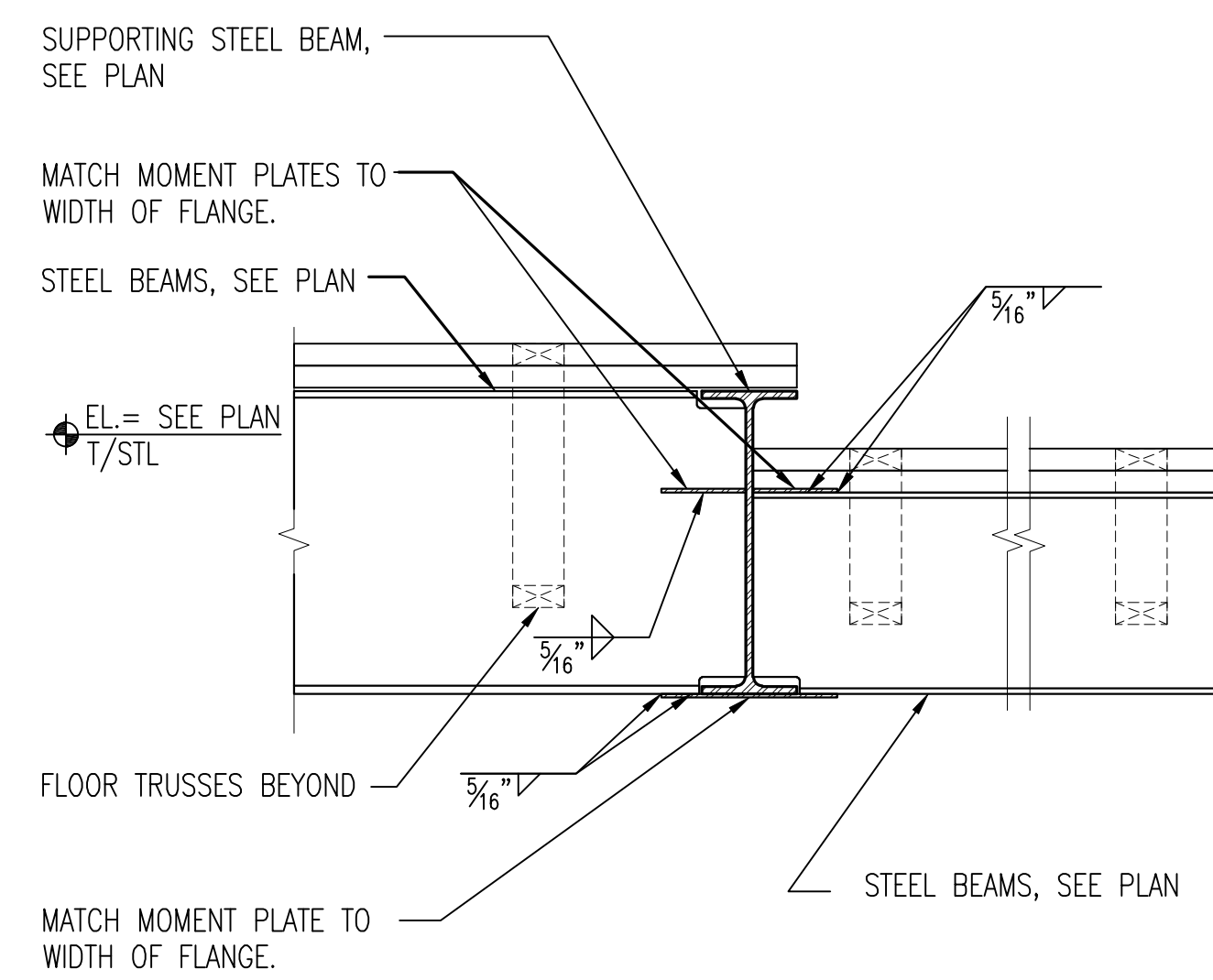
9 CONTINUOUS HSS COLUMN CONNECTION TO WOOD DIAPHRAGM
S6-31 SCALE: 1" = 1'-0"



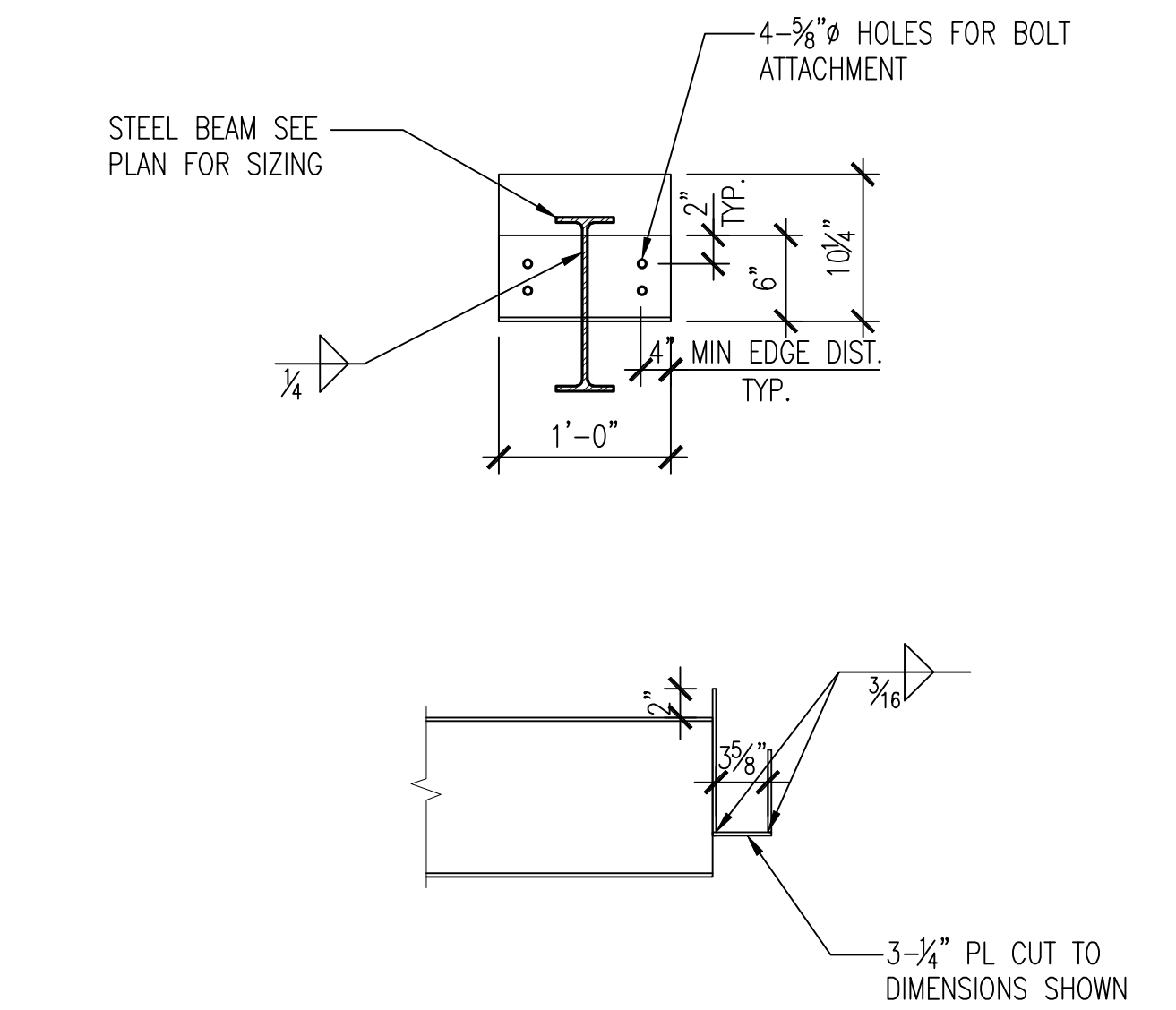
5 SECTION AT STEEL BEAM
S6-31 SCALE: 1" = 1'-0"



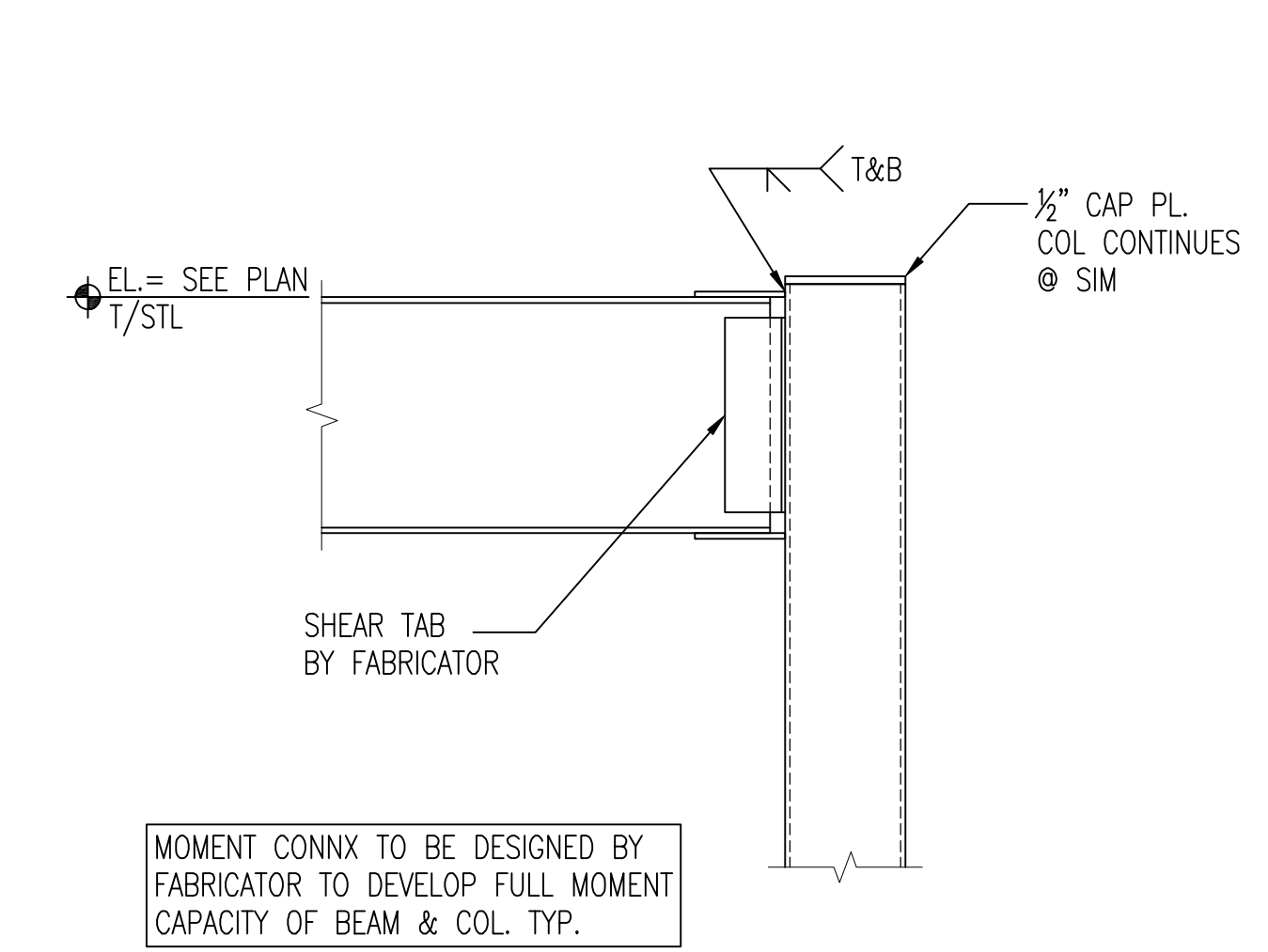
2 WOOD BEAM TO FACE OF TS COL. DETAIL
S6-31 SCALE: 1" = 1'-0"



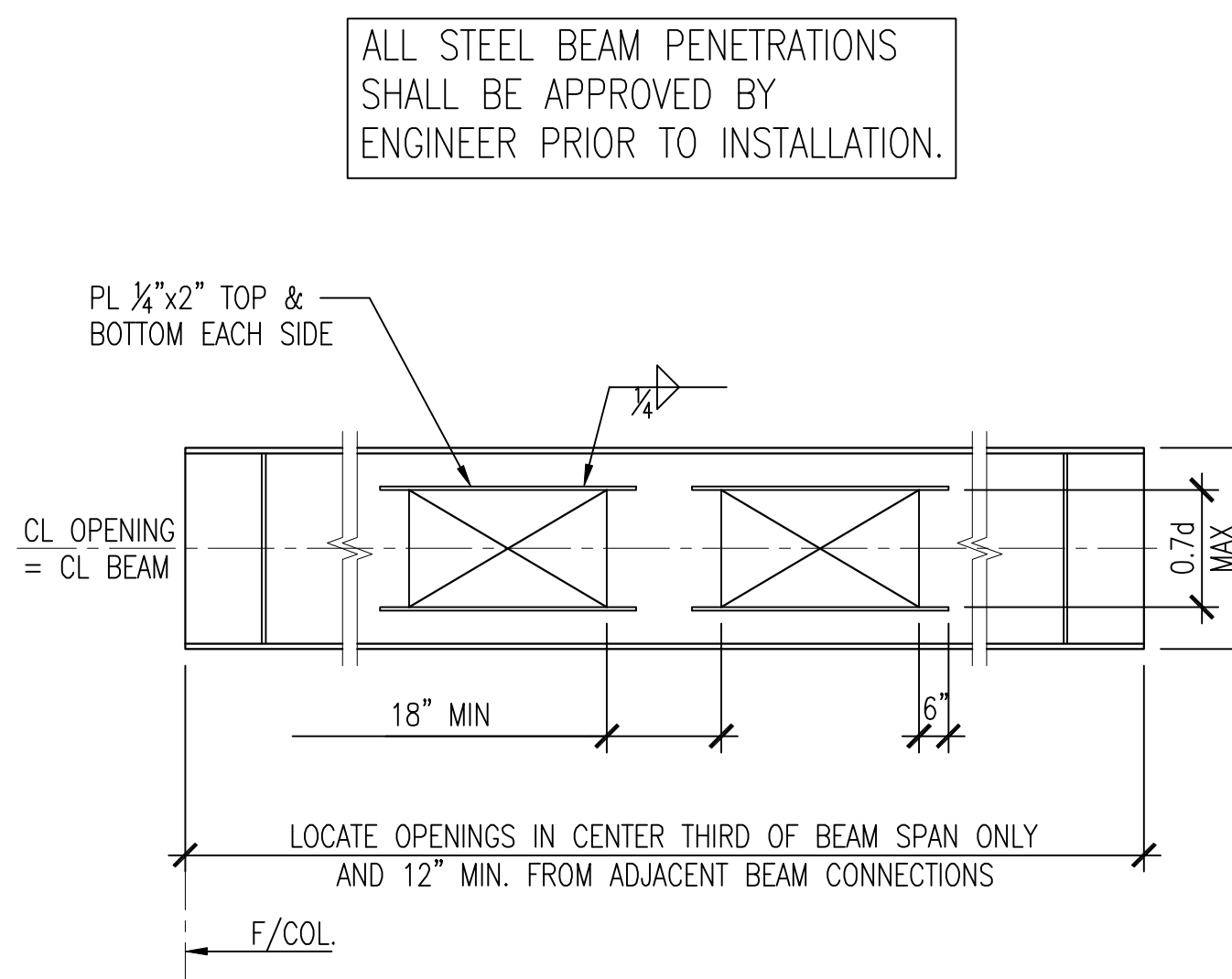
18 MOMENT CONNECTION @ STEEL BEAM
S6-31 SCALE: 1" = 1'-0" TYPICAL DETAIL



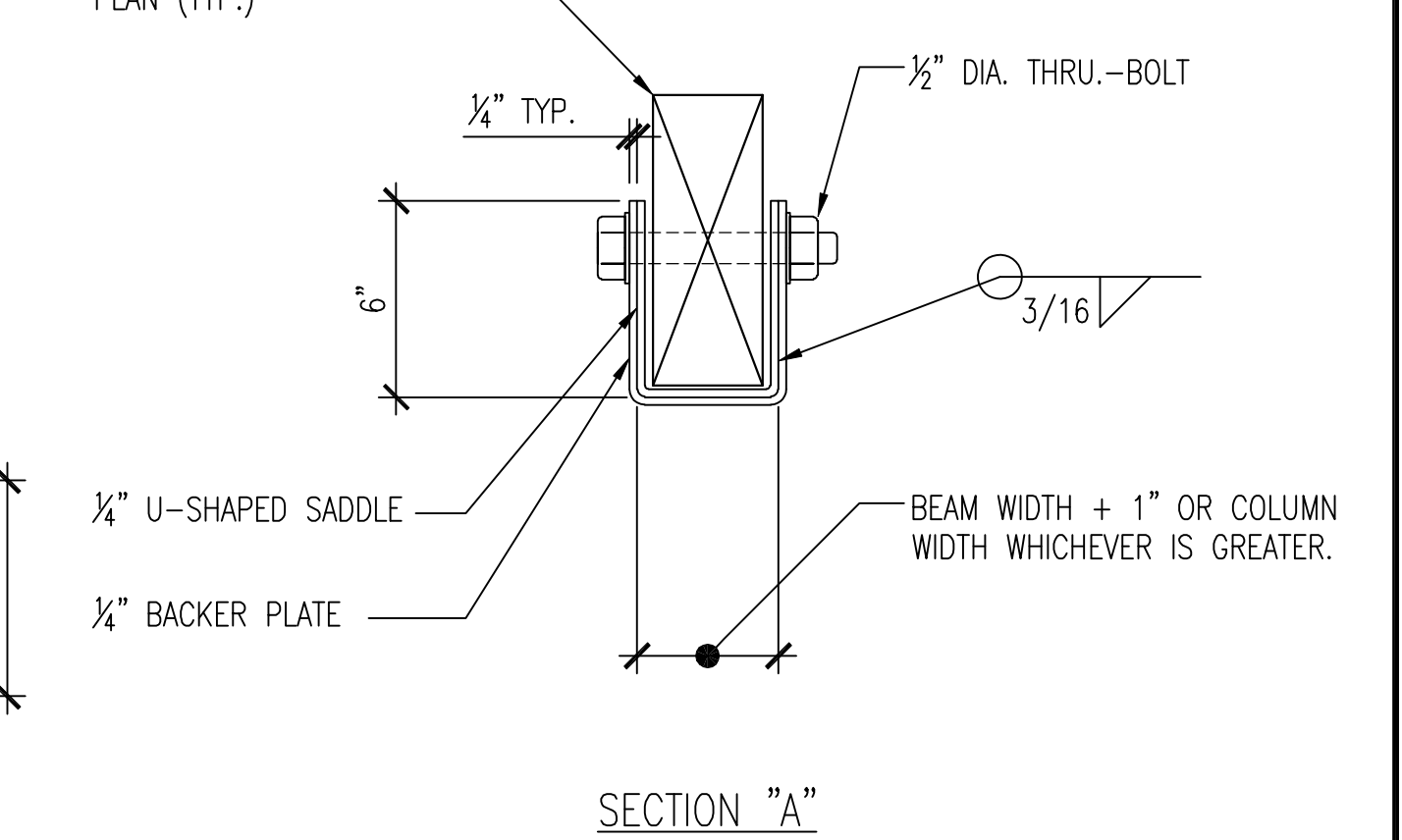
14 SECTION AT CORNER BALCONY HANGER
S6-31 SCALE: 1" = 1'-0"



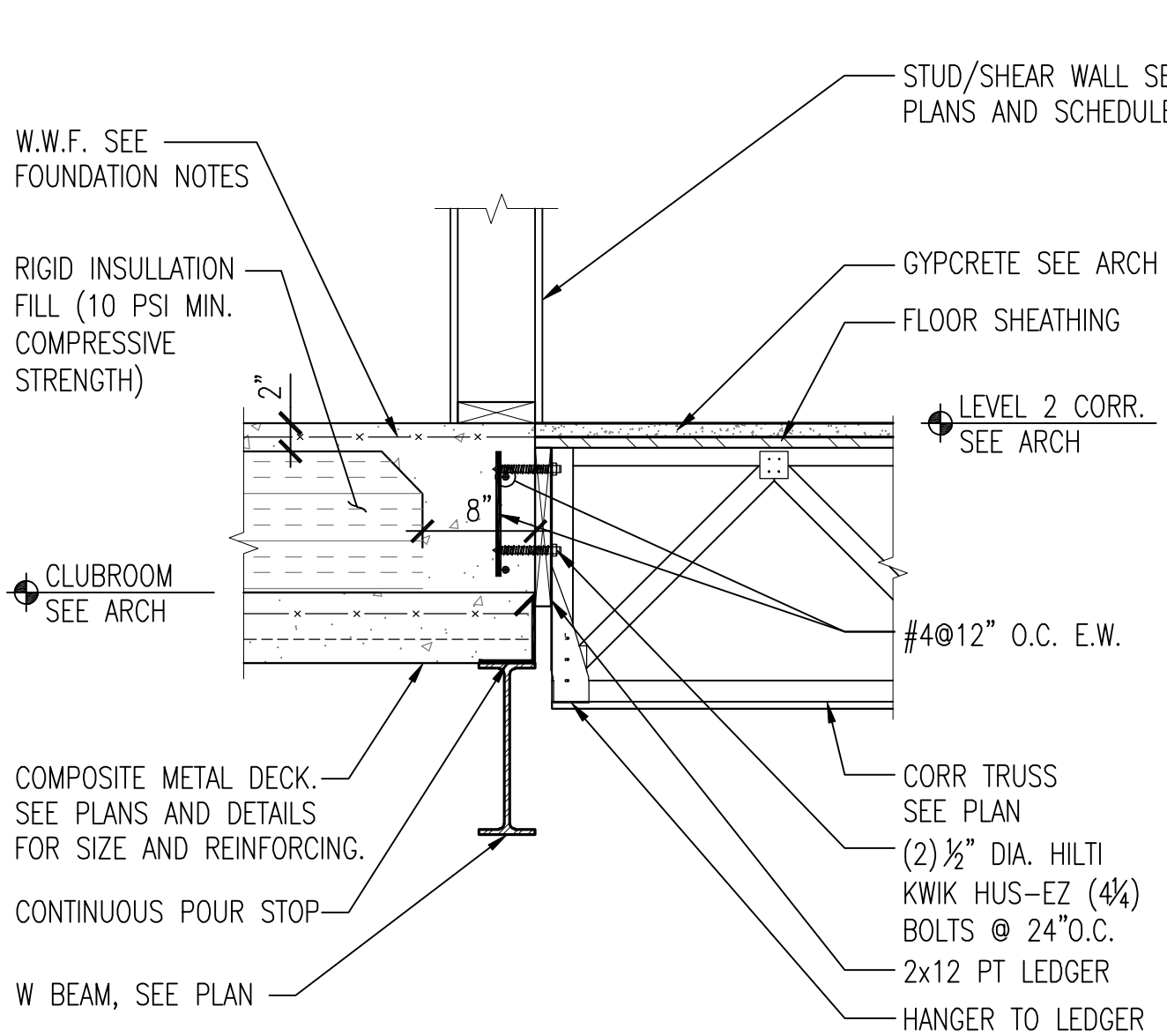
10 MOMENT CONNECTION
S6-31 SCALE: 1" = 1'-0"



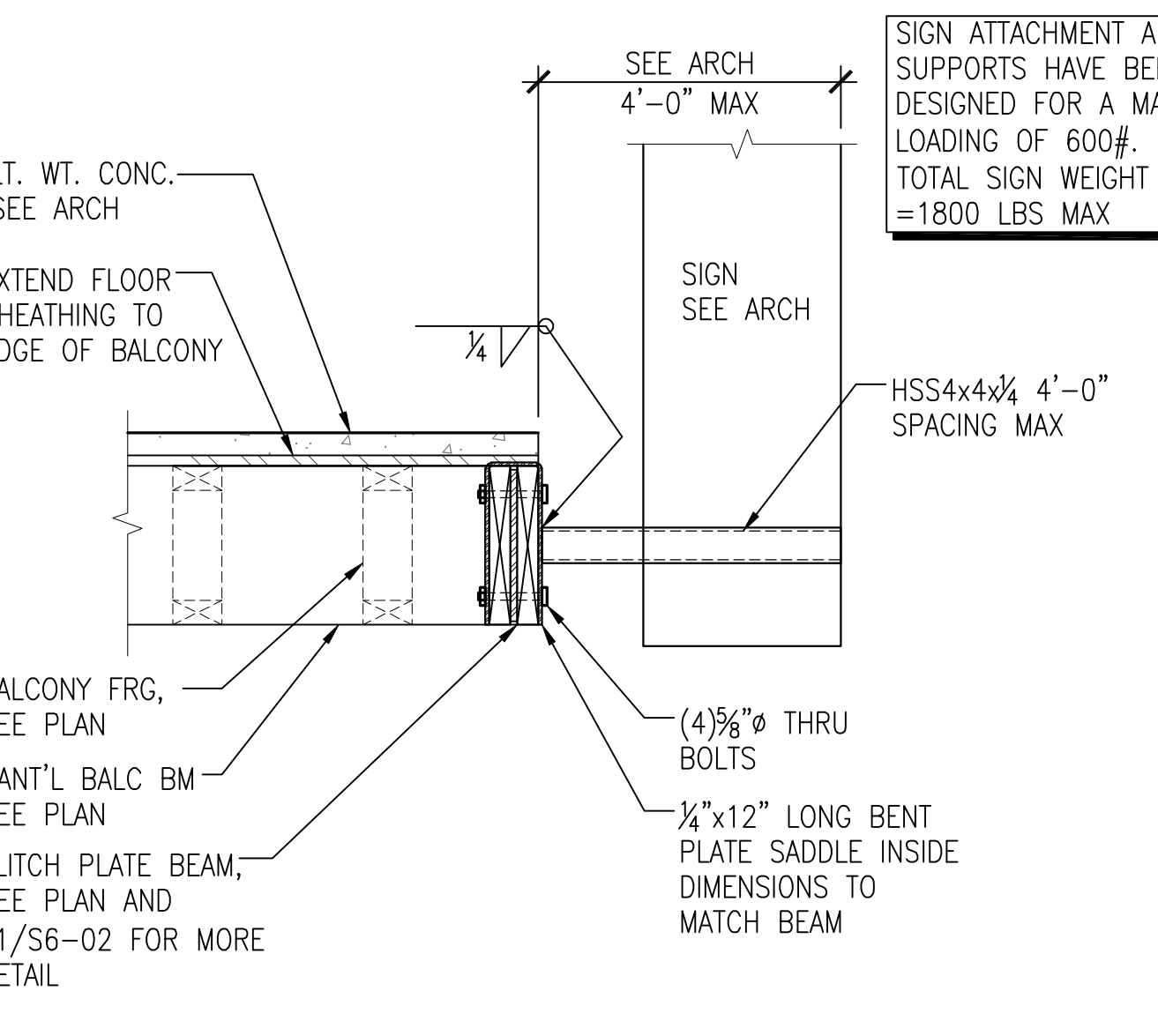
6 PENETRATION AT STEEL BEAM
S6-31 SCALE: 1" = 1'-0"



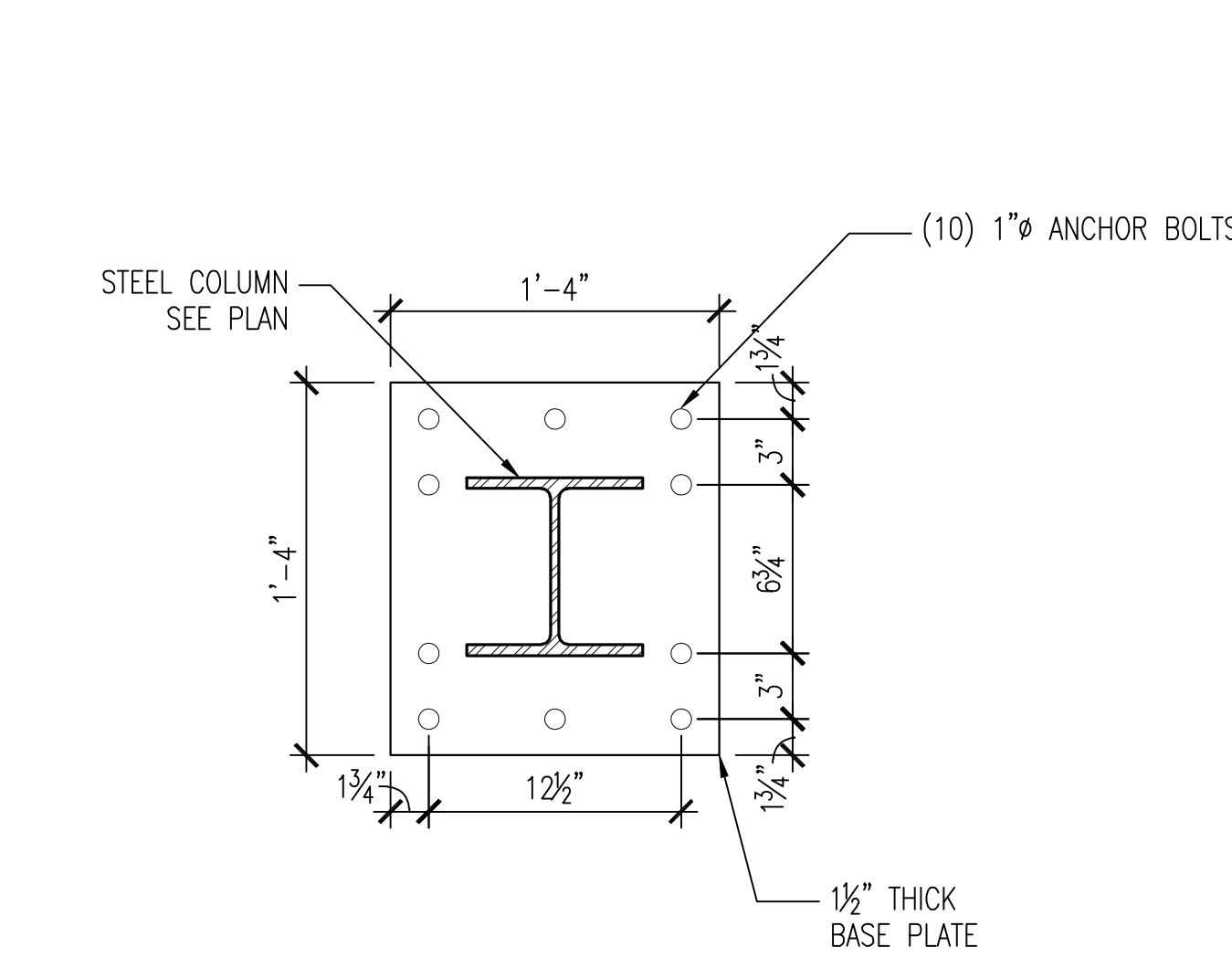
3 SECTION AT PARAPET WALL POST UP STEEL
S6-31 SCALE: 1" = 1'-0"



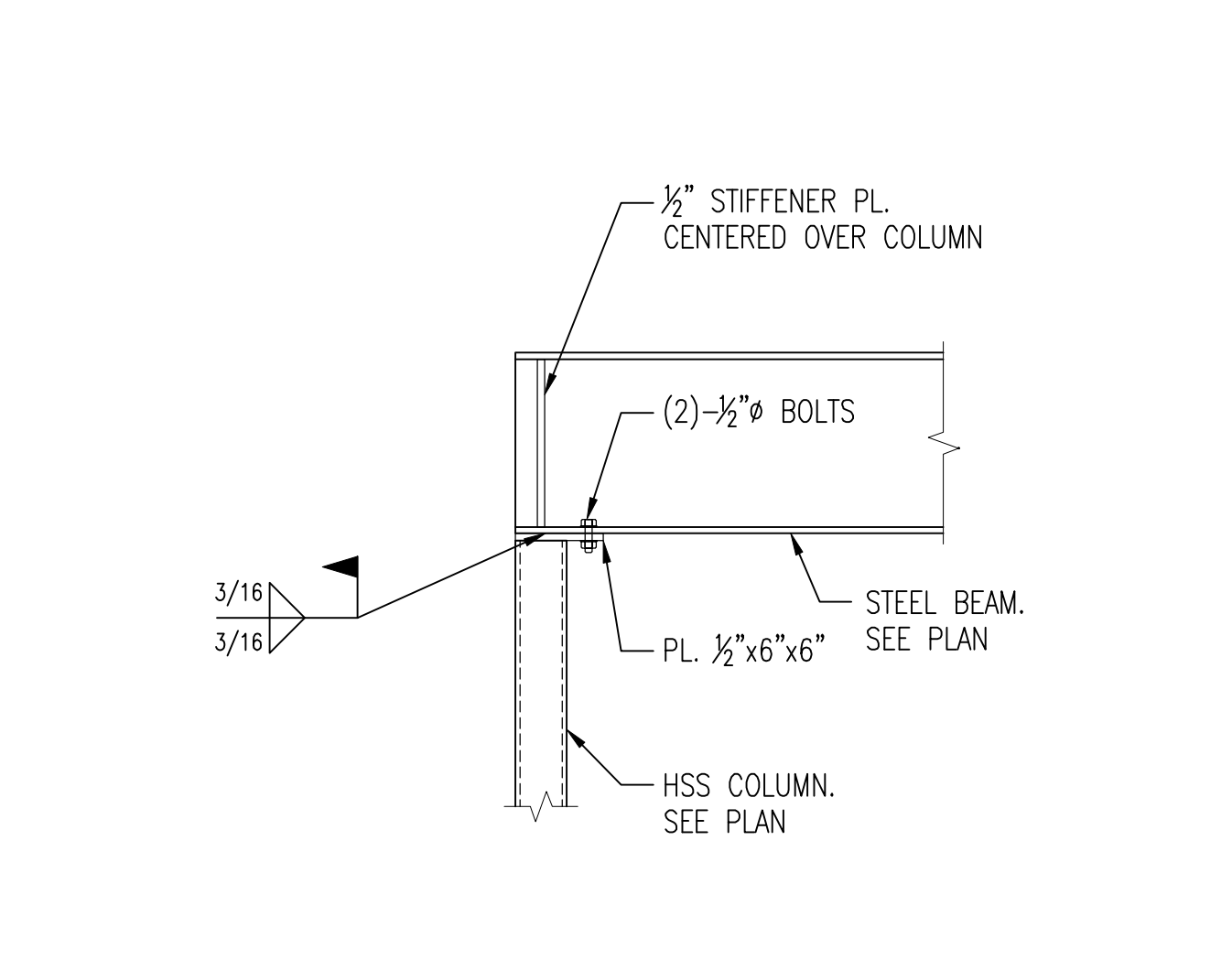
19 CONNECTION @ METAL DECK & CORRIDOR FRG
S6-31 SCALE: 1" = 1'-0" TYPICAL DETAIL



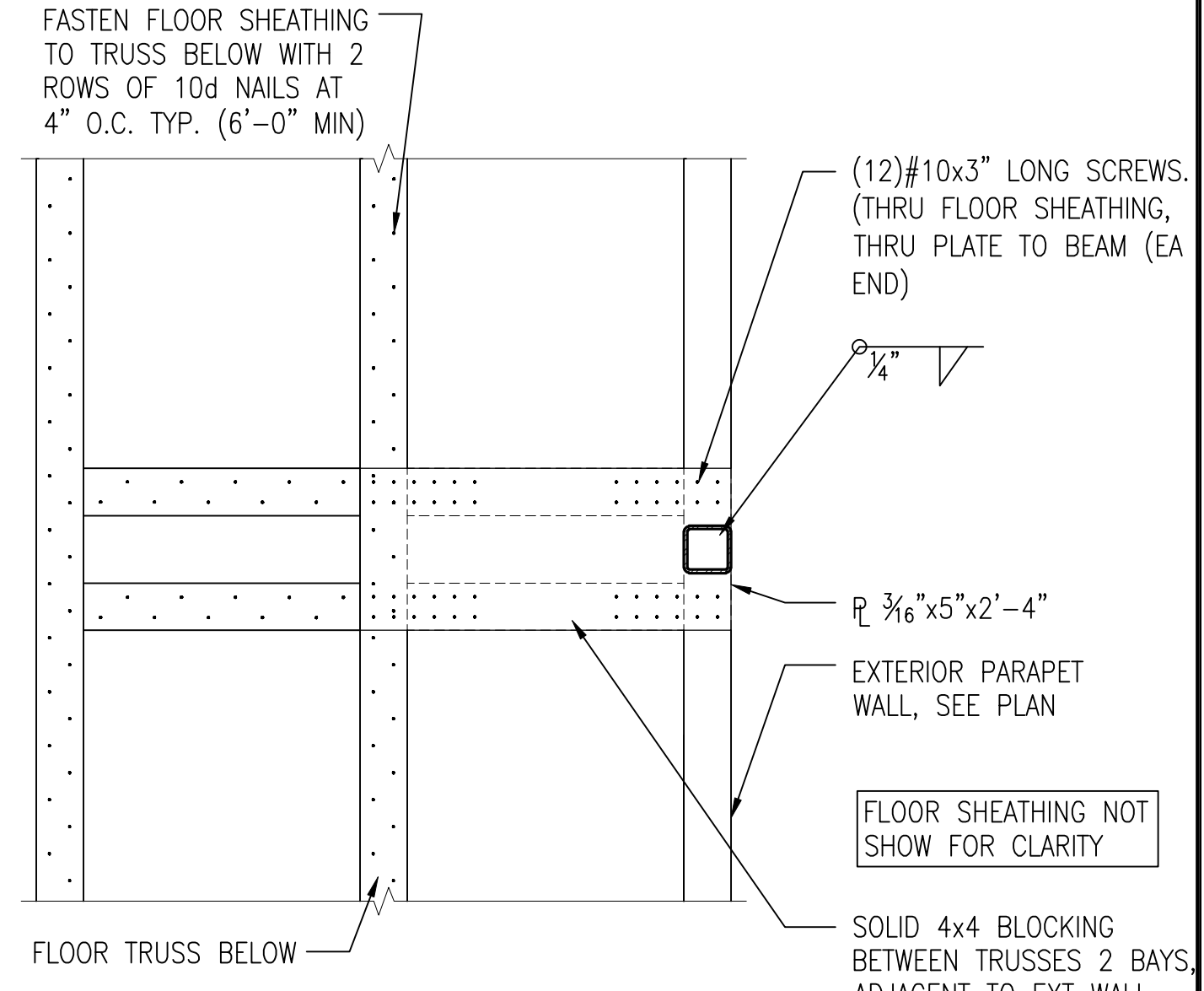
15 SECTION @ BALCONY SIGN POST
S6-31 SCALE: 1" = 1'-0"



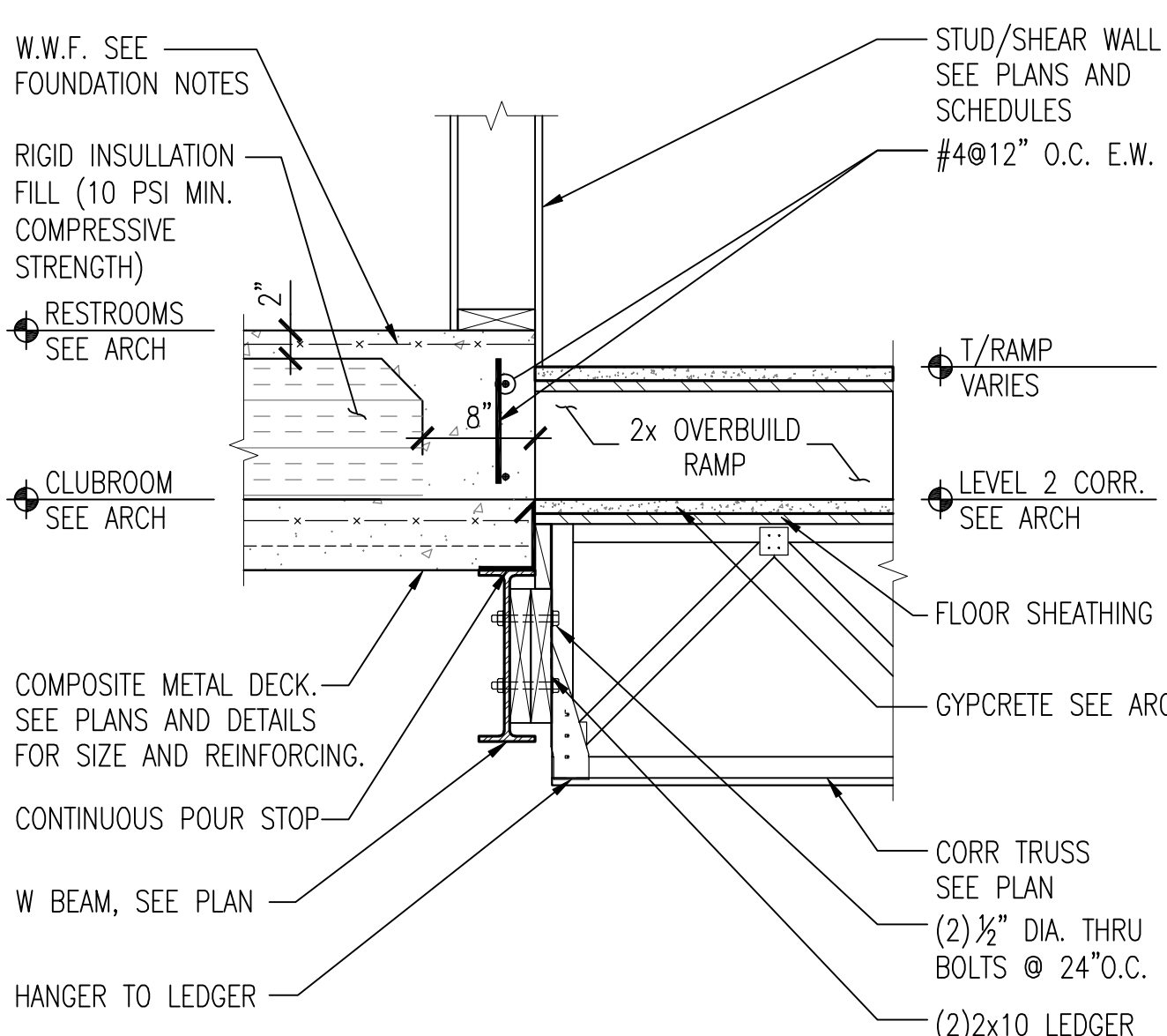
11 MOMENT CONNECTION BASE PLATE DETAIL
S6-31 SCALE: 1-1/2" = 1'-0"



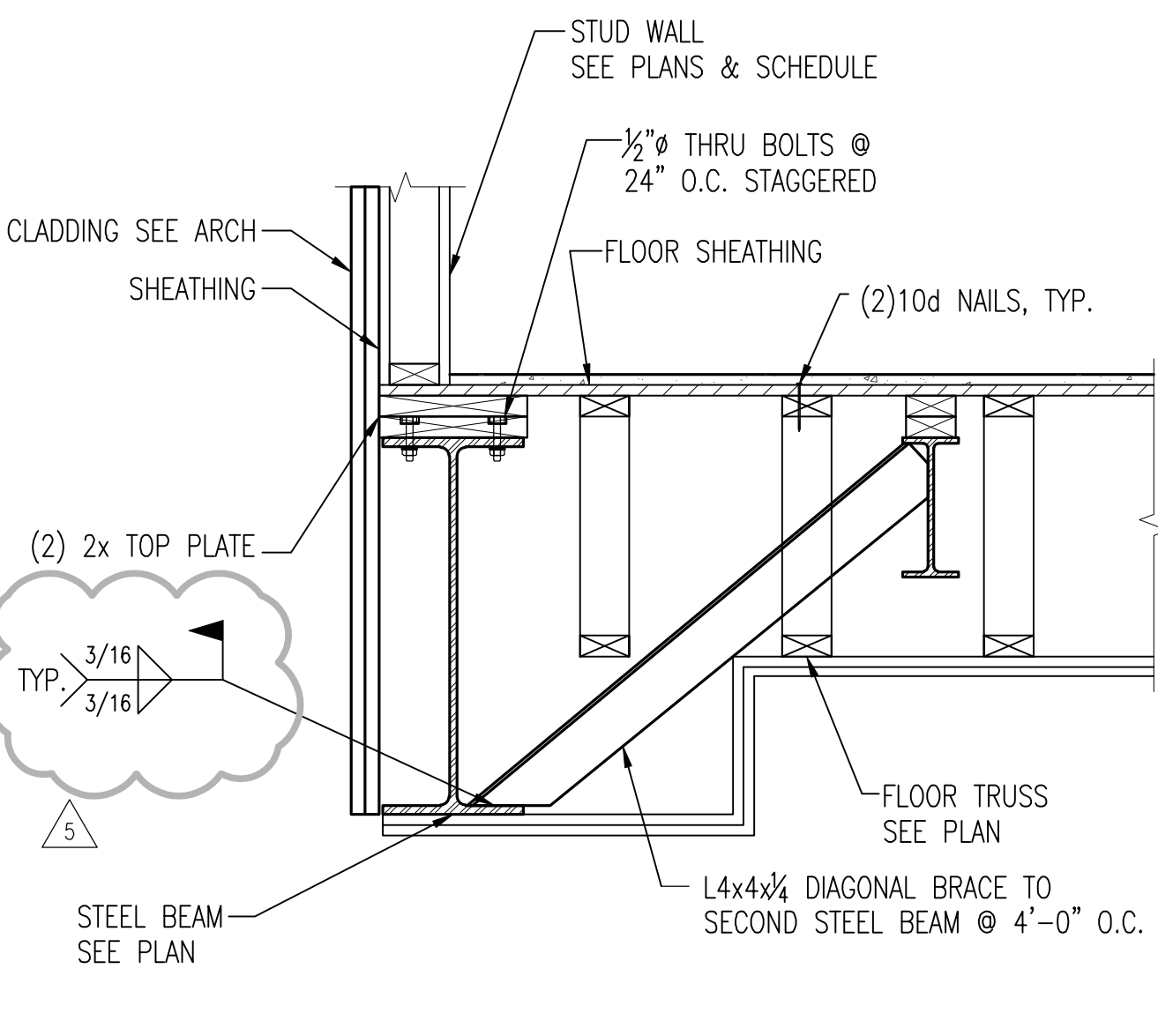
7 TYPICAL STEEL BEAM TO COL CONNECTION
S6-31 SCALE: 1" = 1'-0"



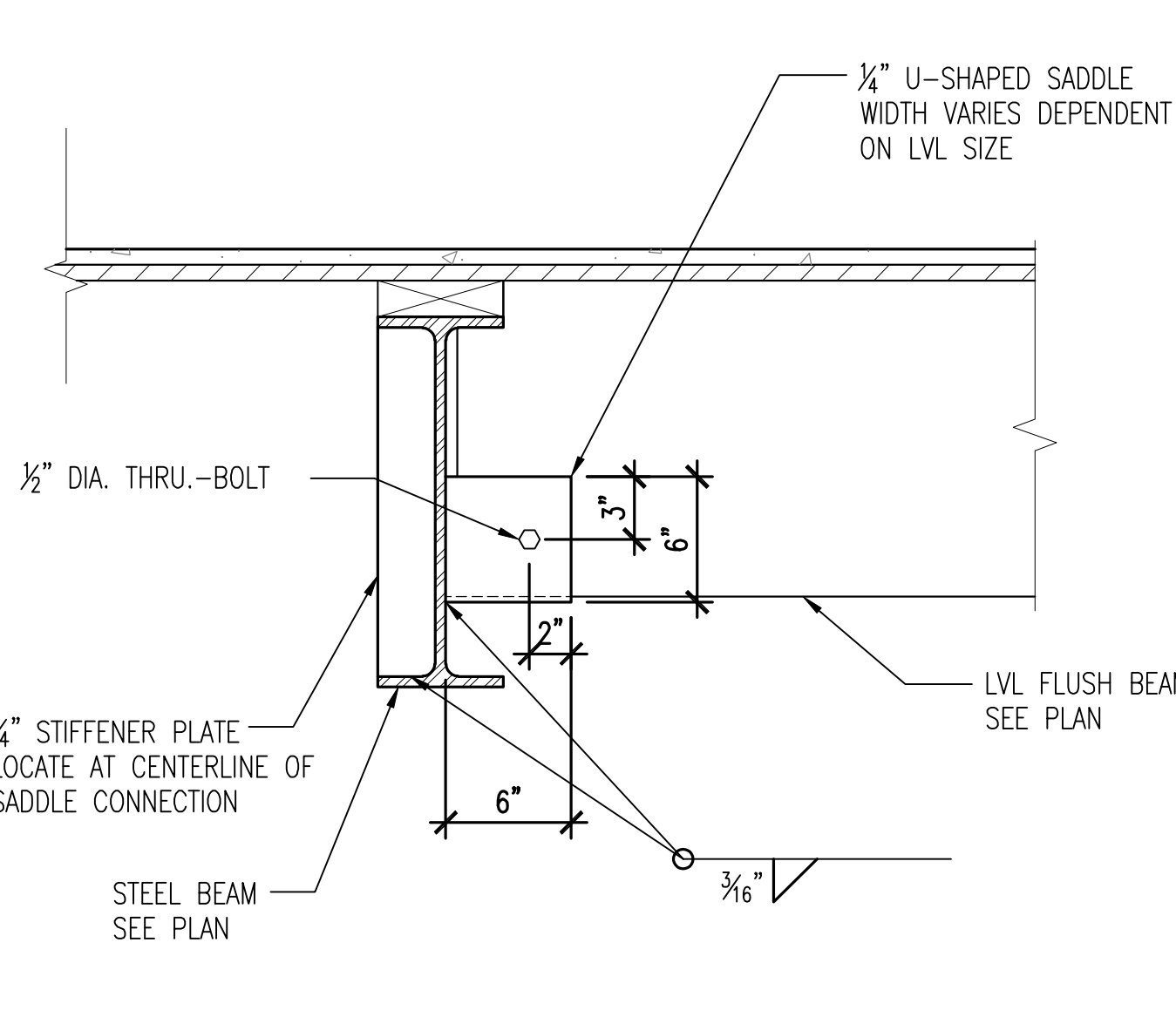
3 SECTION AT PARAPET WALL POST UP STEEL
S6-31 SCALE: 1" = 1'-0"



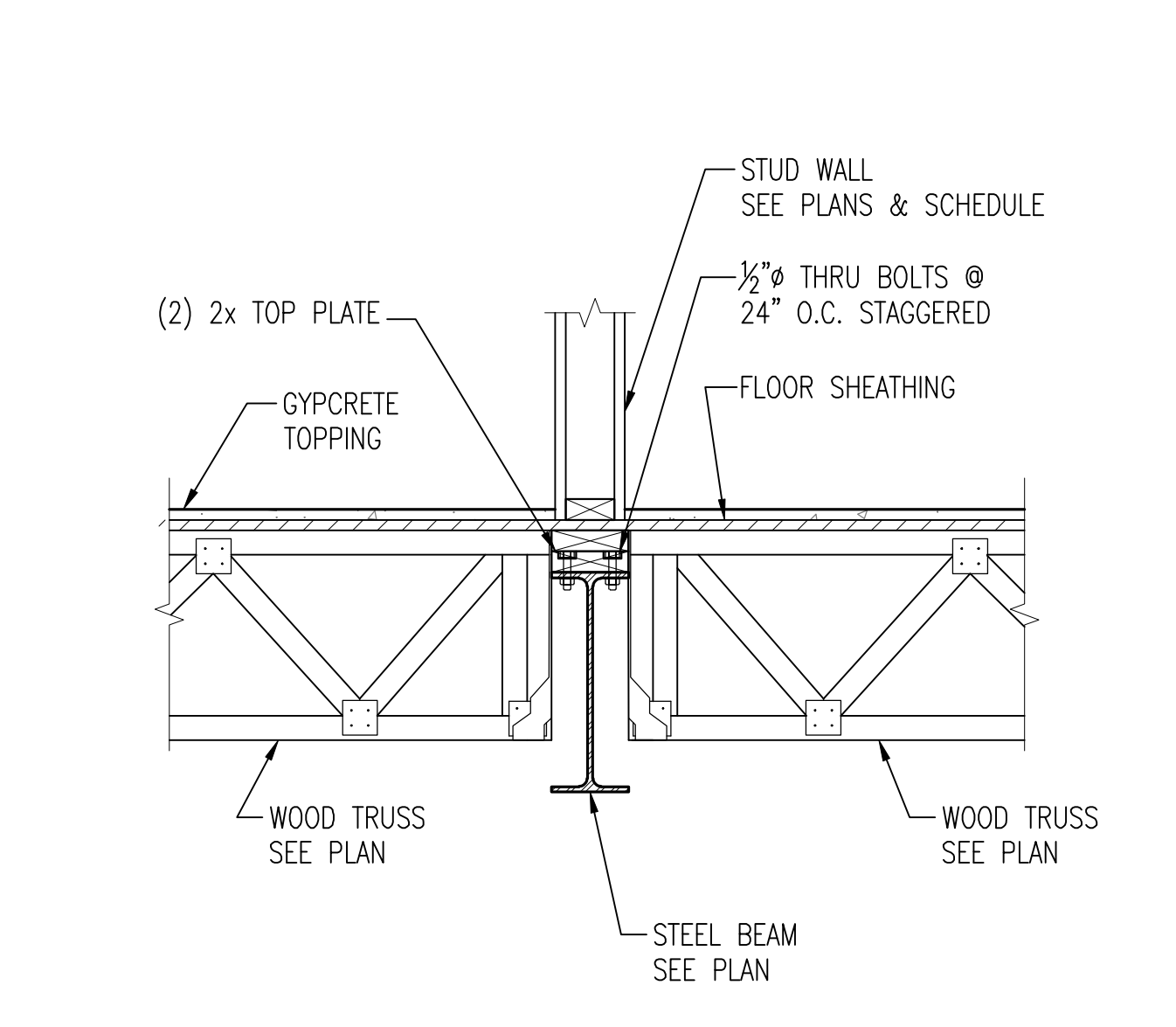
20 CONNECTION @ METAL DECK & CORRIDOR FRG
S6-31 SCALE: 1" = 1'-0" TYPICAL DETAIL



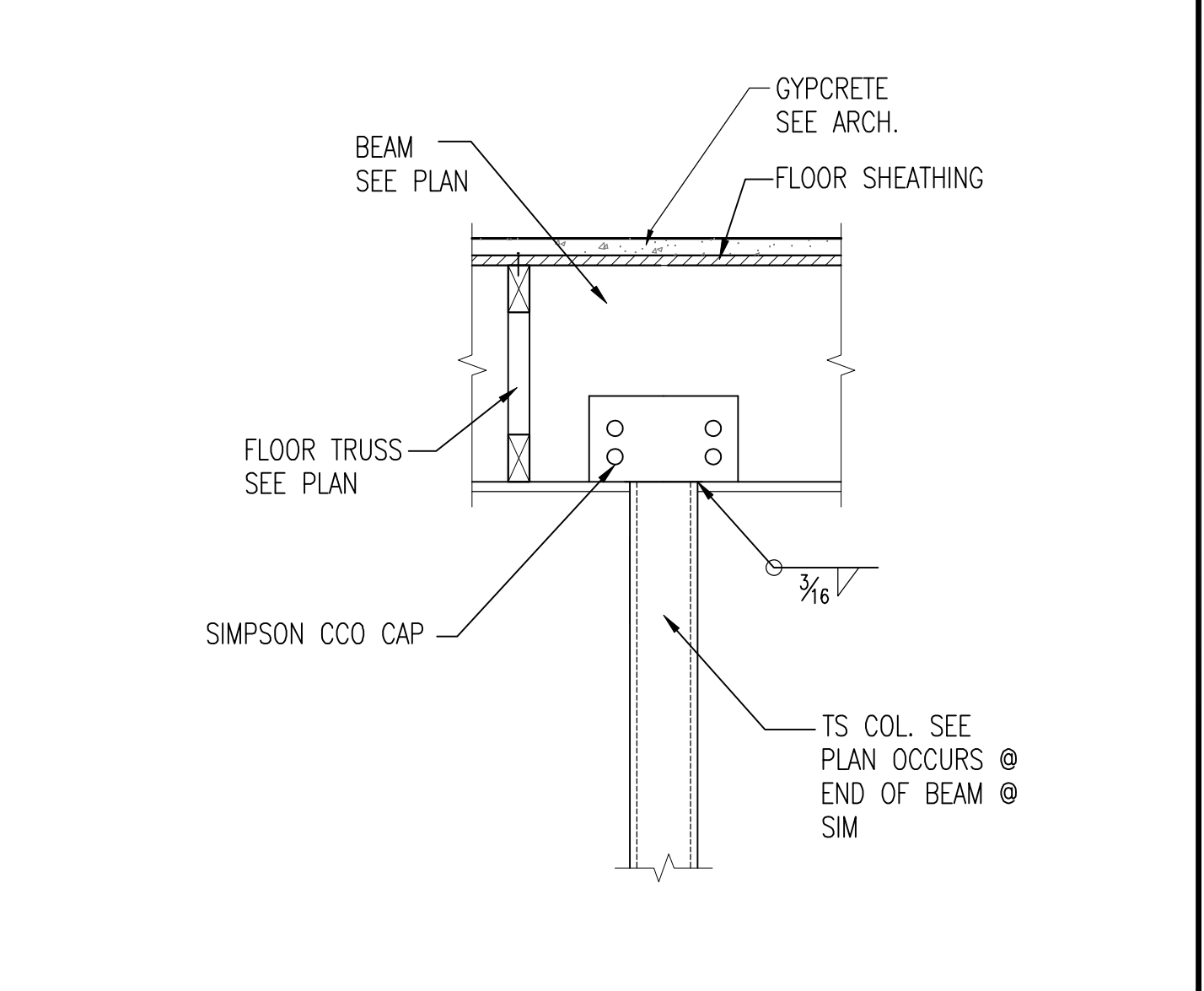
16 SECTION AT STEEL BEAM @ DRIVE ENTRANCE
S6-31 SCALE: 1" = 1'-0"



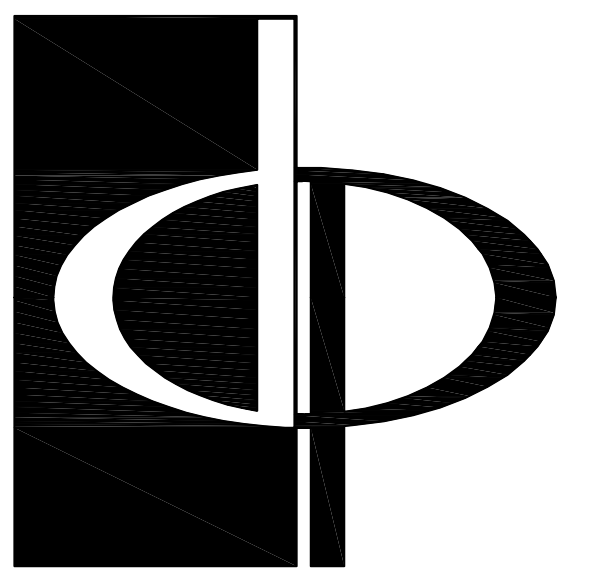
12 WOOD BEAM TO FACE OF STEEL BEAM CONNECTION
S6-31 SCALE: 1-1/2" = 1'-0"



8 SECTION AT STEEL BEAM
S6-31 SCALE: 1" = 1'-0"

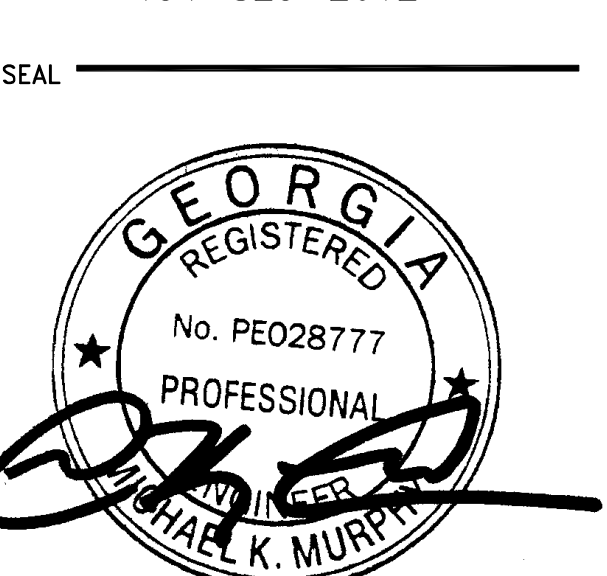


4 WOOD BEAM OVER TS COLUMN CONNECTION
S6-31 SCALE: 1" = 1'-0"

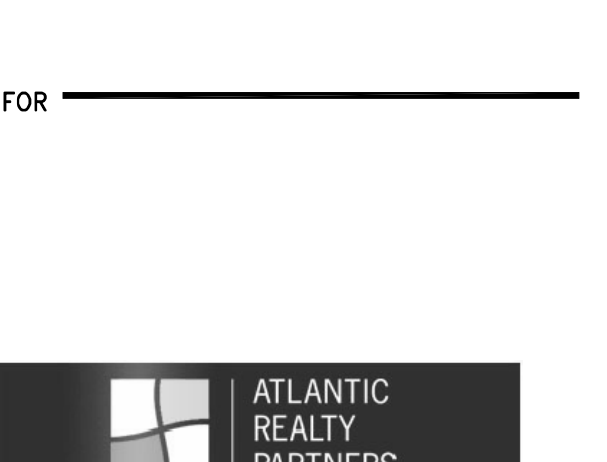


THE PRESTON PARTNERSHIP, LLC
A MULTI-DISCIPLINARY DESIGN FIRM
SOUTH TERRACES
115 PERIMETER CENTER PLACE, SUITE 950
ATLANTA, GEORGIA 30346
TELEPHONE: 770 396 7248
FAX: 770 396 2945
WWW.THEPRESTONPARTNERSHIP.COM
CONSULTANT

m2
STRUCTURAL
887 West Marietta St. NW
Suite T103
Atlanta, GA 30318
www.m2structural.com
404-829-2612



PROJECT
REVEL AT THE BALLPARK
2885 CRESCENT PKWY
SMYRNA, GA 30080



ATLANTIC REALTY PARTNERS
3438 PEACHTREE ROAD, SUITE 1425
ATLANTA, GA 30326
404-591-2900
△ ISSUE DATE

SCHEMATIC DESIGN SET	08/28/2015
03 PROGRESS SET	10/07/2015
02/GMP	10/15/2015
FOUNDATION PERMIT	12/07/2015
75% CDs	01/28/2016
GMP SET	04/03/2017
PERMIT SET	05/22/2017
5 BLDG PERMIT COMMENTS	10/02/2017

DATE	05/22/2017
JOB NUMBER	1493101
DRAWN BY	CTK
CHECKED BY	JWS
SHEET TITLE	STEEL DETAILS
SHEET NUMBER	S6-31
COMMENTS	RELEASED FOR CONSTRUCTION

© 2014 © 2015 The Preston Partnership, LLC