

NOT A CONTRACT DOCUMENT

ASBUILT

- CRITICAL WINTERIZATION ITEMS
- GAS SHUTOFF LOCATIONS
- CLEANOUTS & TRAP PRIMERS
- DOMESTIC WATER VALVES
- PLUMBING EQUIPMENT

NO.	REVISION	DATE	BY

DRAWING TITLE:	PLUMBING AS-BUILT - UNDERGROUND
PROJECT:	3RD & PEACHTREE

THESE DRAWINGS HAVE BEEN PREPARED BY MILLER MECHANICAL C & E LLC FOR THEIR EXCLUSIVE USE. ANY OTHER USE IS PROHIBITED.

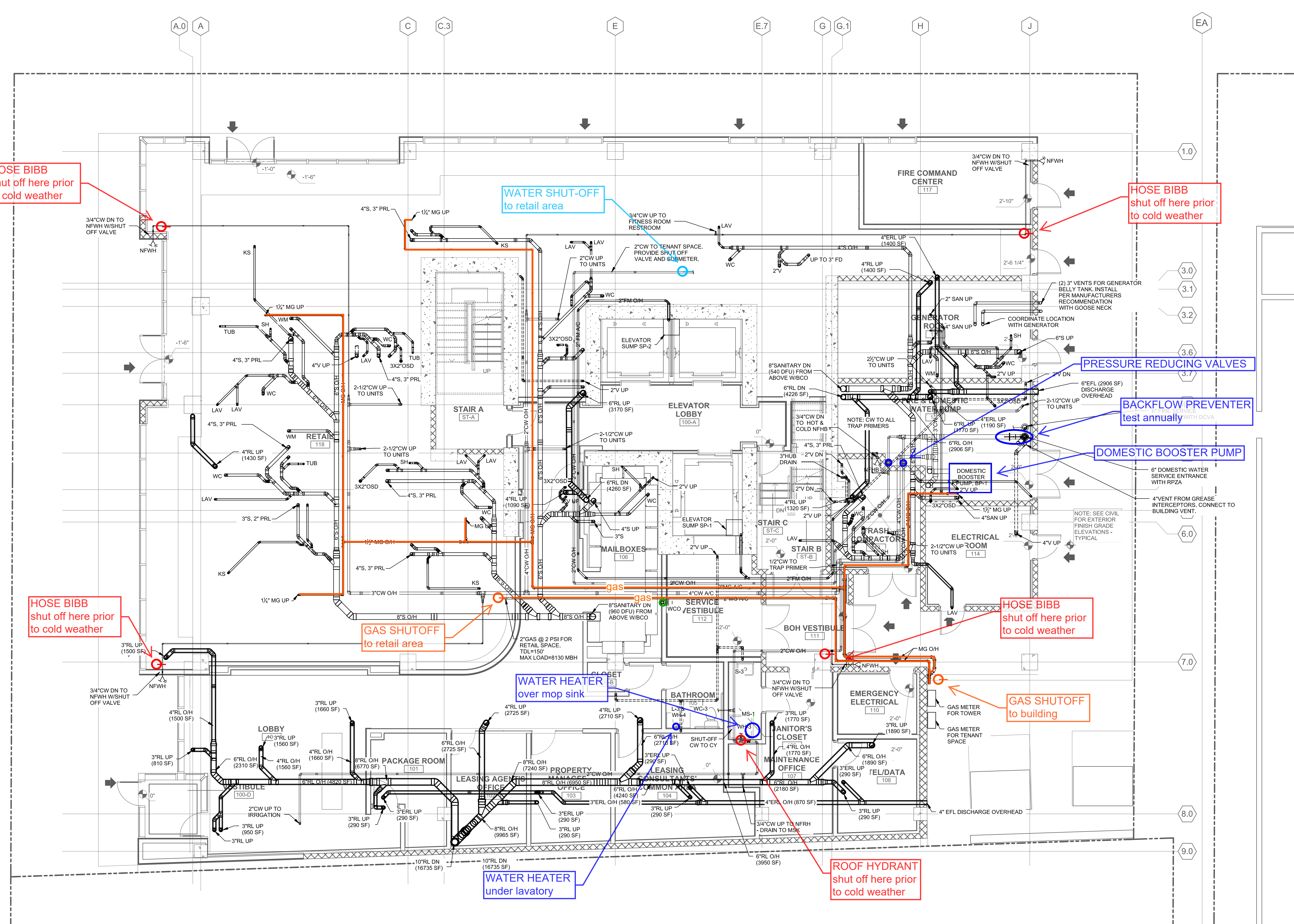
DATE	8-1-17
SCALE	AS SHOWN
DRAWN BY	tkc
CHECKED BY	
JOB NO.	10284



MMCE

1976 Airport Industrial Park Drive
Marietta, GA 30060-9203
(P)770-952-3864
(F)770-952-0299

SHEET NO.	ASBLT-UG
CONTRACT DWG. #	



NOT A CONTRACT DOCUMENT

NO.	REVISION	DATE	BY

DRAWING TITLE:	PLUMBING AS-BUILT - LEVEL 1
PROJECT:	3RD & PEACHTREE

DATE	8-1-17
SCALE	AS SHOWN
DRAWN BY	tkc
CHECKED BY	
JOB NO.	10284

THESE DRAWINGS HAVE BEEN PREPARED BY MILLER MECHANICAL C & E LLC FOR THEIR EXCLUSIVE USE. ANY OTHER USE IS PROHIBITED.



MMCE

1976 Airport Industrial Park Drive
Marietta, GA 30060-9203
(P)770-952-3864
(F)770-952-0299

SHEET NO.

ASBLT-L1

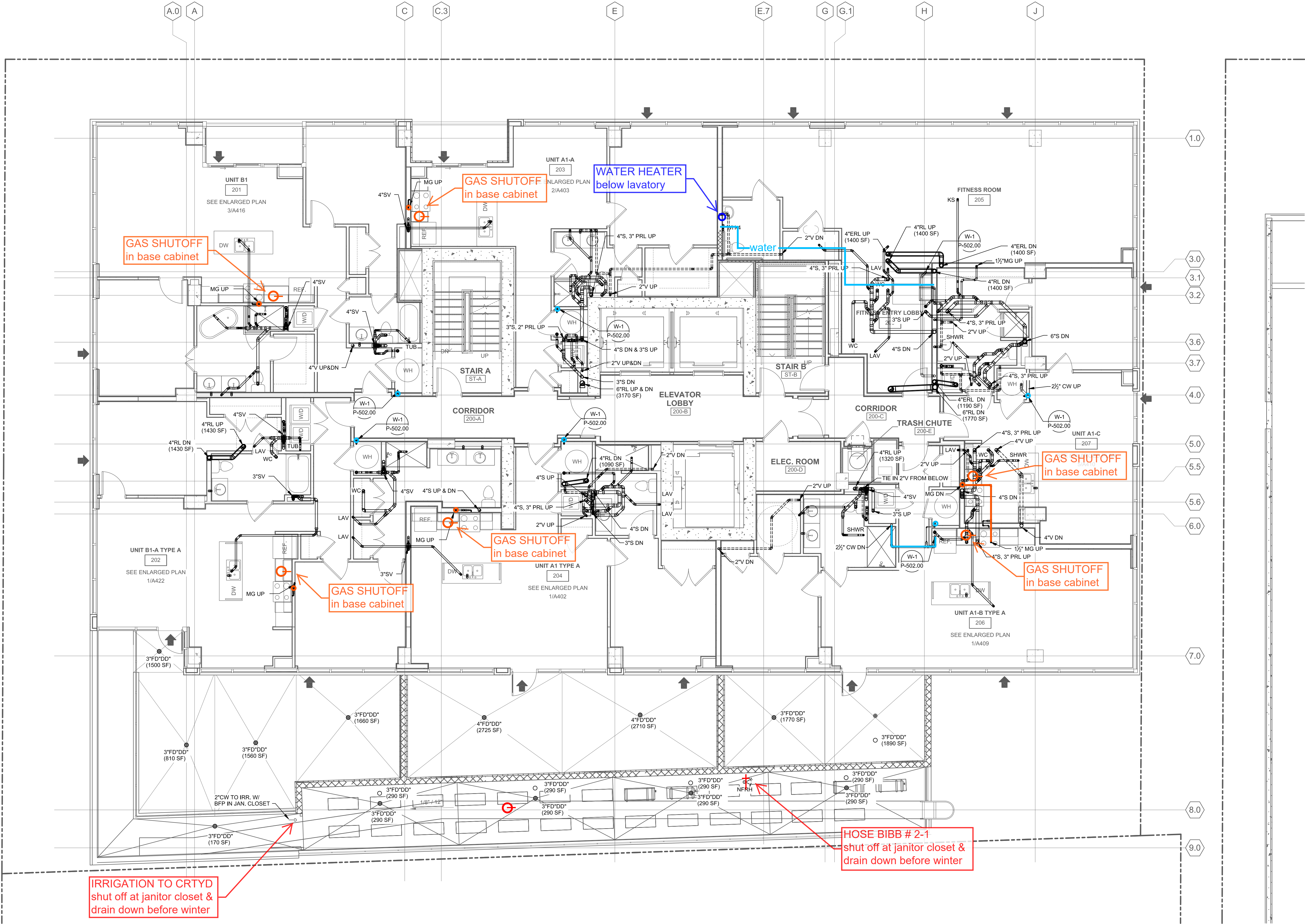
CONTRACT DWG. #

ASBUILT

- CRITICAL WINTERIZATION ITEMS
- GAS SHUTOFF LOCATIONS
- CLEANOUTS & TRAP PRIMERS
- DOMESTIC WATER VALVES
- PLUMBING EQUIPMENT

WATER MAIN INFORMATION
Boosted water main runs in vertical risers at each unit.
There is a shutoff valve for each unit in the mechanical closet.
There are additional shutoff valves on levels 7, 14 & 21 for each riser itself

APARTMENT GAS INFORMATION
Gas is provided to ranges on all floors.
Shutoffs and gas regulators are in base cabinet, typically to left of range.



NOT A CONTRACT DOCUMENT

NO.	REVISION	DATE	BY

DRAWING TITLE:	PLUMBING AS-BUILT - LEVEL 2
PROJECT:	3RD & PEACHTREE

DATE	8-1-17
SCALE	AS SHOWN
DRAWN BY	tkc
CHECKED BY	
JOB NO.	10284

--

MMCE

1976 Airport Industrial Park Drive
Marietta, GA 30060-9203
(P)770-952-3864
(F)770-952-0299

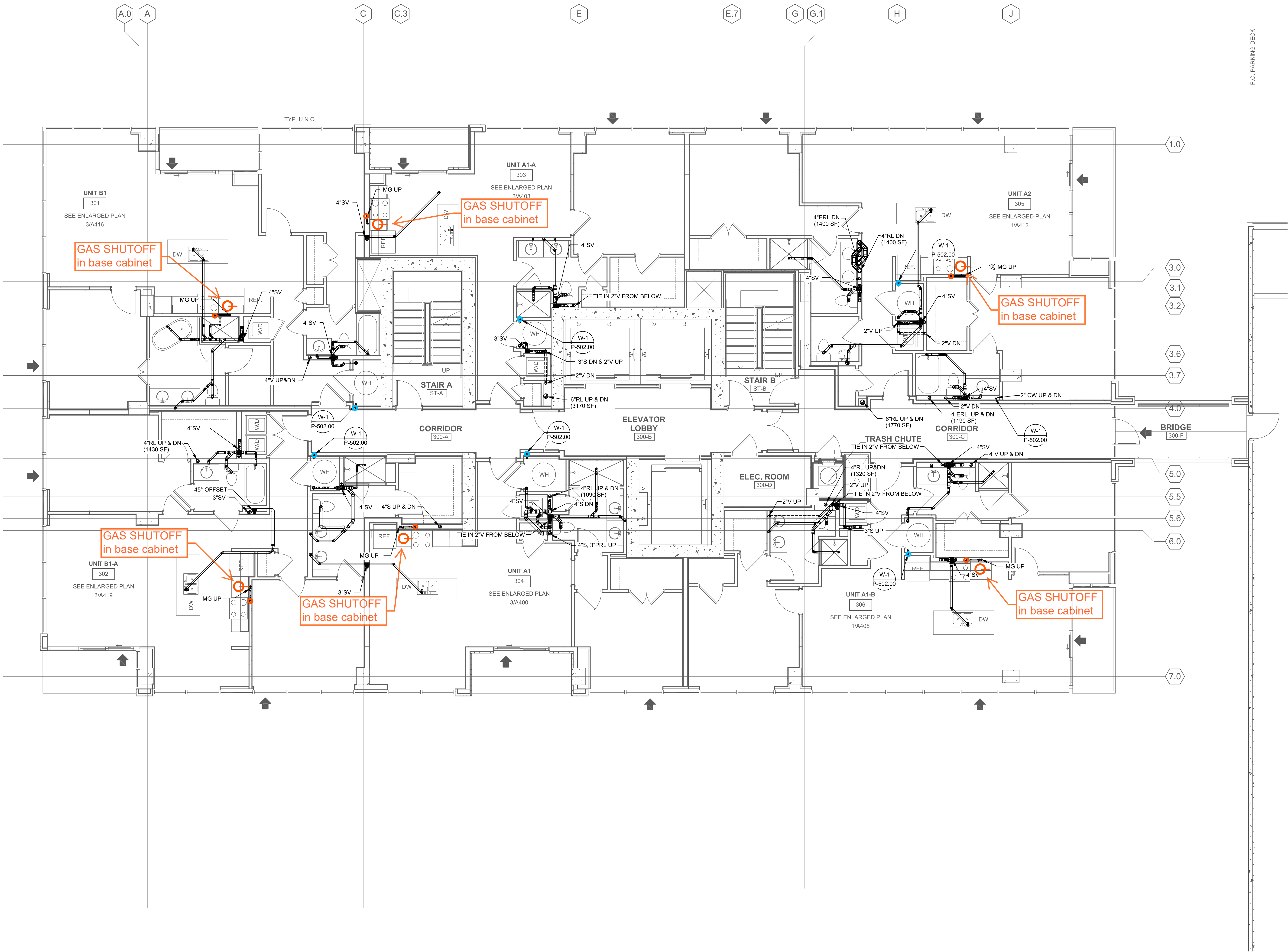
SHEET NO.	ASBLT-L2
CONTRACT DWG. #	

ASBUILT

- CRITICAL WINTERIZATION ITEMS
- GAS SHUTOFF LOCATIONS
- CLEANOUTS & TRAP PRIMERS
- DOMESTIC WATER VALVES
- PLUMBING EQUIPMENT

WATER MAIN INFORMATION
Boosted water main runs in vertical risers at each unit.
There is a shutoff valve for each unit in the mechanical closet.
There are additional shutoff valves on levels 7, 14 & 21 for each riser itself

APARTMENT GAS INFORMATION
Gas is provided to ranges on all floors.
Shutoffs and gas regulators are in base cabinet, typically to left of range.



NOT A CONTRACT DOCUMENT

NO.	REVISION	DATE	BY

DRAWING TITLE:	PLUMBING AS-BUILT - LEVEL 3
PROJECT:	3RD & PEACHTREE

THESE DRAWINGS HAVE BEEN PREPARED BY MILLER MECHANICAL C & E LLC FOR THEIR EXCLUSIVE USE. ANY OTHER USE IS PROHIBITED.

DATE	8-1-17
SCALE	AS SHOWN
DRAWN BY	tkc
CHECKED BY	
JOB NO.	10284




MMCE
1976 Airport Industrial Park Drive
Marietta, GA 30060-9203
(P) 770-952-3864
(F) 770-952-0299

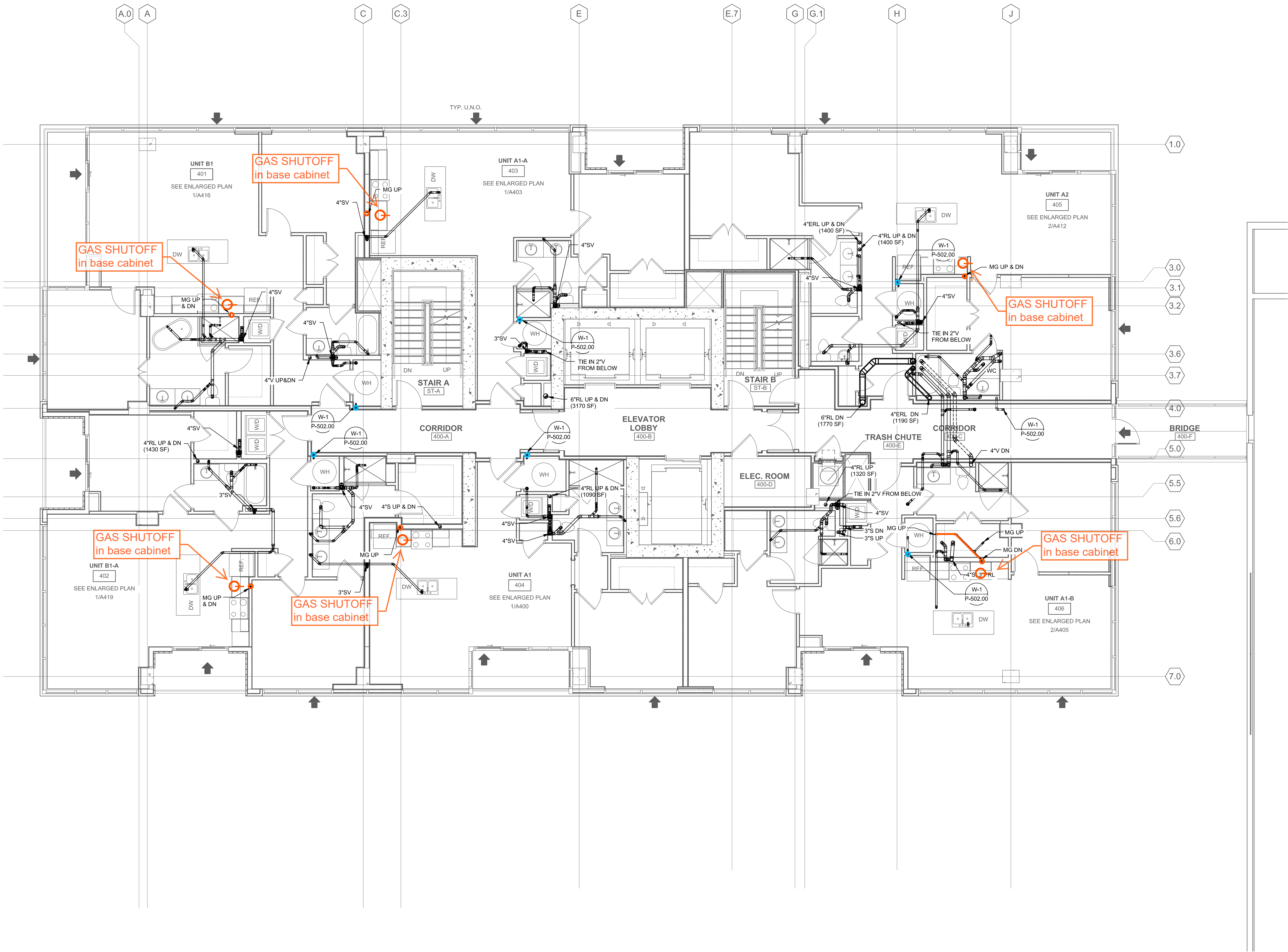
SHEET NO.	ASBLT-L3
CONTRACT DWG. #	

ASBUILT

- CRITICAL WINTERIZATION ITEMS
- GAS SHUTOFF LOCATIONS
- CLEANOUTS & TRAP PRIMERS
- DOMESTIC WATER VALVES
- PLUMBING EQUIPMENT

WATER MAIN INFORMATION
Boosted water main runs in vertical risers at each unit.
There is a shutoff valve for each unit in the mechanical closet.
There are additional shutoff valves on levels 7, 14 & 21 for each riser itself

APARTMENT GAS INFORMATION
Gas is provided to ranges on all floors.
Shutoffs and gas regulators are in base cabinet, typically to left of range.



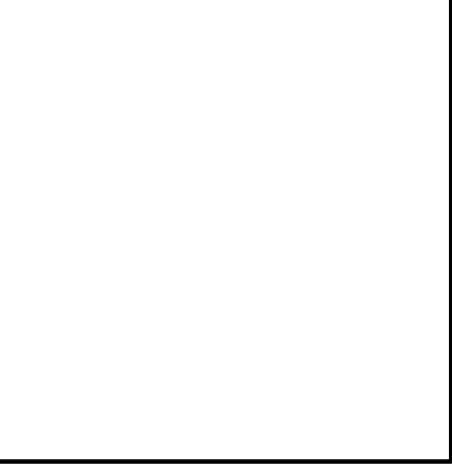
NOT A CONTRACT DOCUMENT

NO.	REVISION	DATE	BY

DRAWING TITLE:	PLUMBING AS-BUILT - LEVEL 4
PROJECT:	3RD & PEACHTREE

THESE DRAWINGS HAVE BEEN PREPARED BY MILLER MECHANICAL C & E LLC FOR THEIR EXCLUSIVE USE. ANY OTHER USE IS PROHIBITED.

DATE	8-1-17
SCALE	AS SHOWN
DRAWN BY	tkc
CHECKED BY	
JOB NO.	10284





MMCE

1976 Airport Industrial Park Drive
Marietta, GA 30060-9203
(P)770-952-3864
(F)770-952-0299

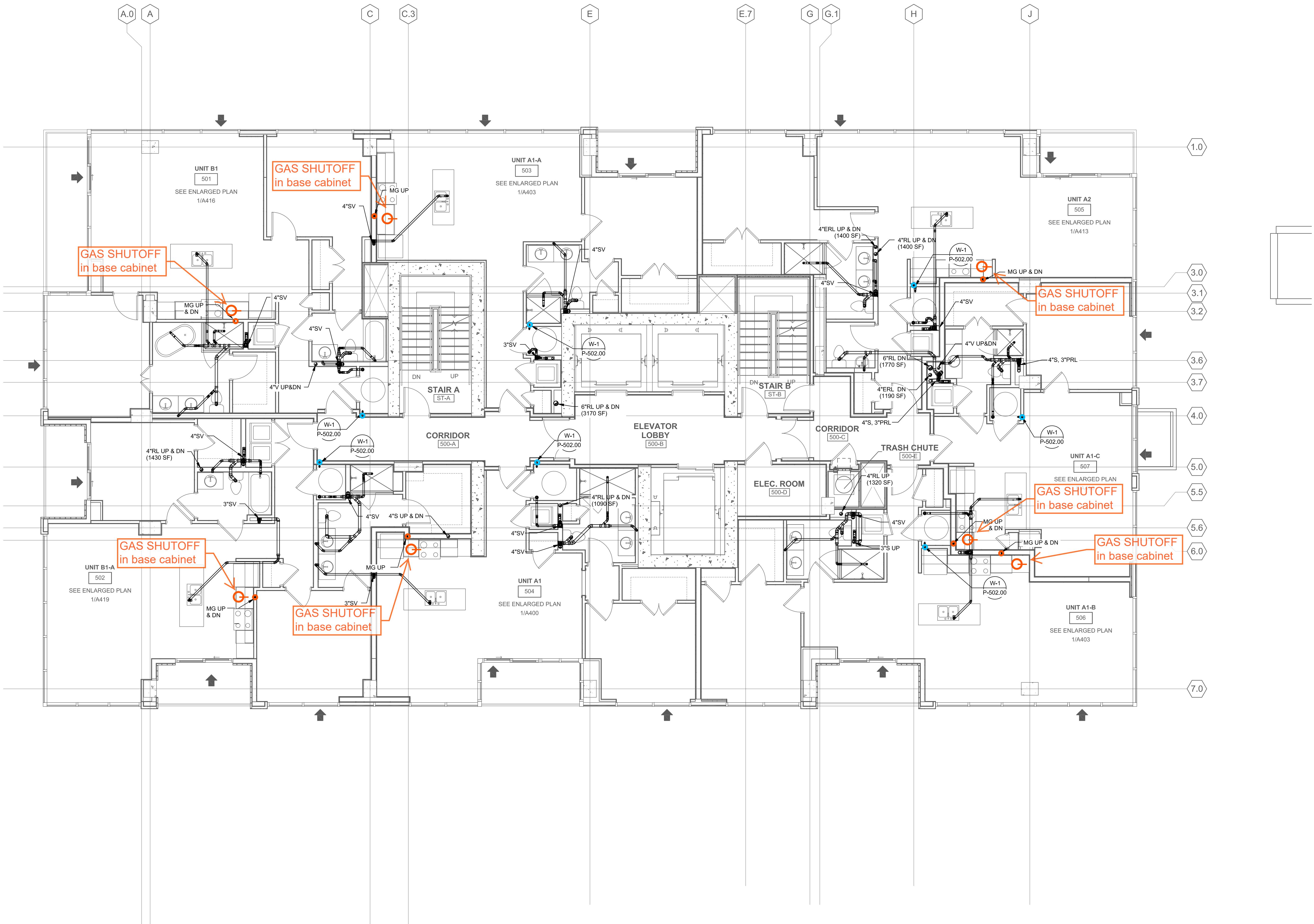
SHEET NO.	ASBLT-L4
CONTRACT DWG. #	

ASBUILT

- CRITICAL WINTERIZATION ITEMS
- GAS SHUTOFF LOCATIONS
- CLEANOUTS & TRAP PRIMERS
- DOMESTIC WATER VALVES
- PLUMBING EQUIPMENT

WATER MAIN INFORMATION
Boosted water main runs in vertical risers at each unit.
There is a shutoff valve for each unit in the mechanical closet.
There are additional shutoff valves on levels 7, 14 & 21 for each riser itself

APARTMENT GAS INFORMATION
Gas is provided to ranges on all floors.
Shutoffs and gas regulators are in base cabinet, typically to left of range.



NOT A CONTRACT DOCUMENT

NO.	REVISION	DATE	BY

DRAWING TITLE:	PLUMBING AS-BUILT - LEVEL 5
PROJECT:	3RD & PEACHTREE

THESE DRAWINGS HAVE BEEN PREPARED BY MILLER MECHANICAL C & E LLC FOR THEIR EXCLUSIVE USE. ANY OTHER USE IS PROHIBITED.

DATE	8-1-17
SCALE	AS SHOWN
DRAWN BY	tkc
CHECKED BY	
JOB NO.	10284



MMCE

1976 Airport Industrial Park Drive
Marietta, GA 30060-9203
(P)770-952-3864
(F)770-952-0299

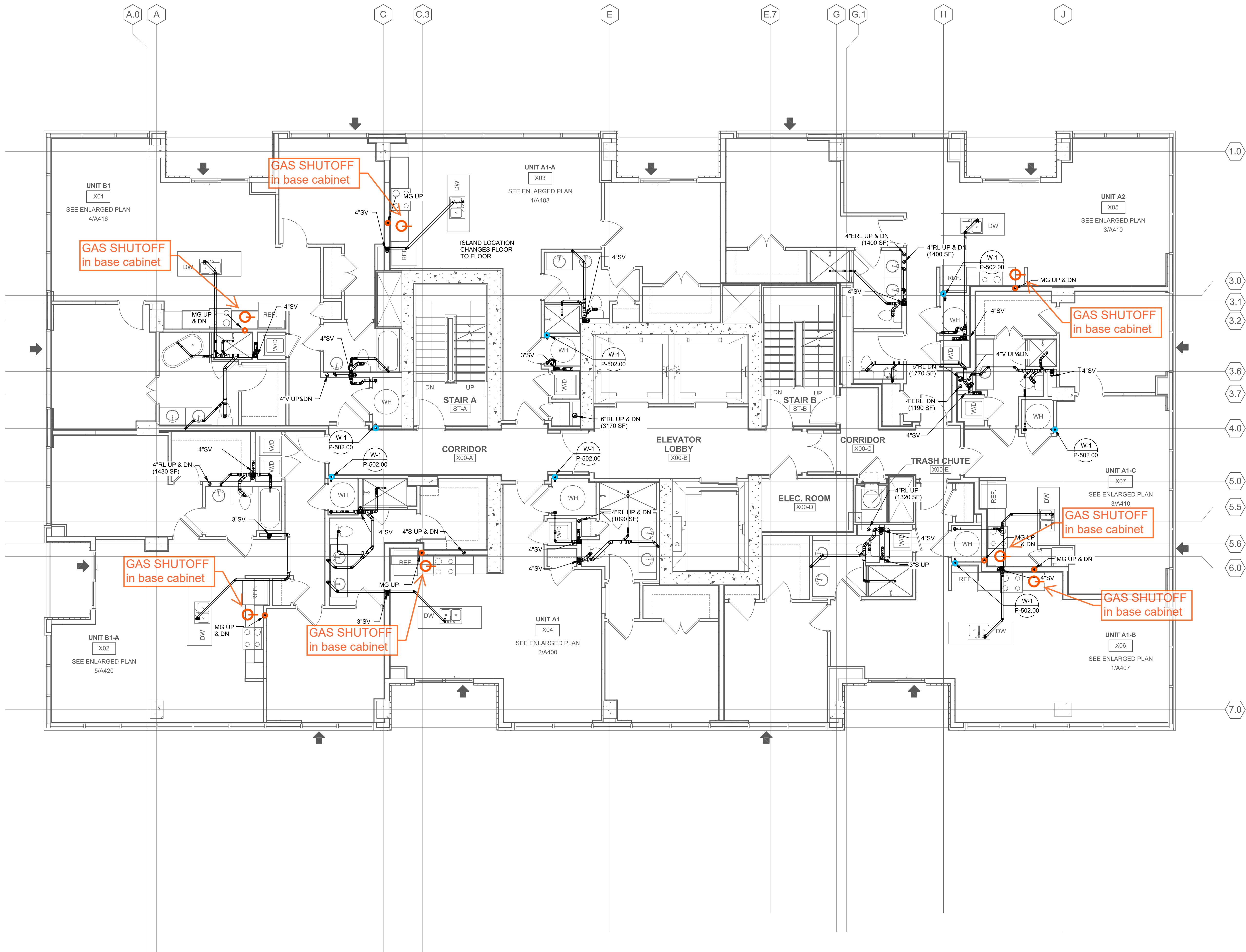
SHEET NO.	ASBLT-L5
CONTRACT DWG. #	

ASBUILT

- CRITICAL WINTERIZATION ITEMS
- GAS SHUTOFF LOCATIONS
- CLEANOUTS & TRAP PRIMERS
- DOMESTIC WATER VALVES
- PLUMBING EQUIPMENT

WATER MAIN INFORMATION
Boosted water main runs in vertical risers at each unit.
There is a shutoff valve for each unit in the mechanical closet.
There are additional shutoff valves on levels 7, 14 & 21 for each riser itself

APARTMENT GAS INFORMATION
Gas is provided to ranges on all floors.
Shutoffs and gas regulators are in base cabinet, typically to left of range.



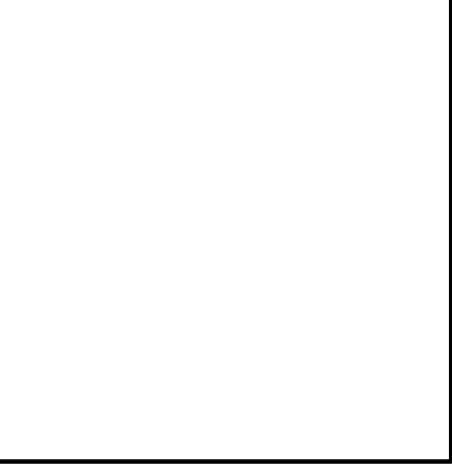
NOT A CONTRACT DOCUMENT

NO.	REVISION	DATE	BY

DRAWING TITLE:	PLUMBING AS-BUILT - LEVEL 6 (7-20)
PROJECT:	3RD & PEACHTREE

THESE DRAWINGS HAVE BEEN PREPARED BY MILLER MECHANICAL C & E LLC FOR THEIR EXCLUSIVE USE. ANY OTHER USE IS PROHIBITED.

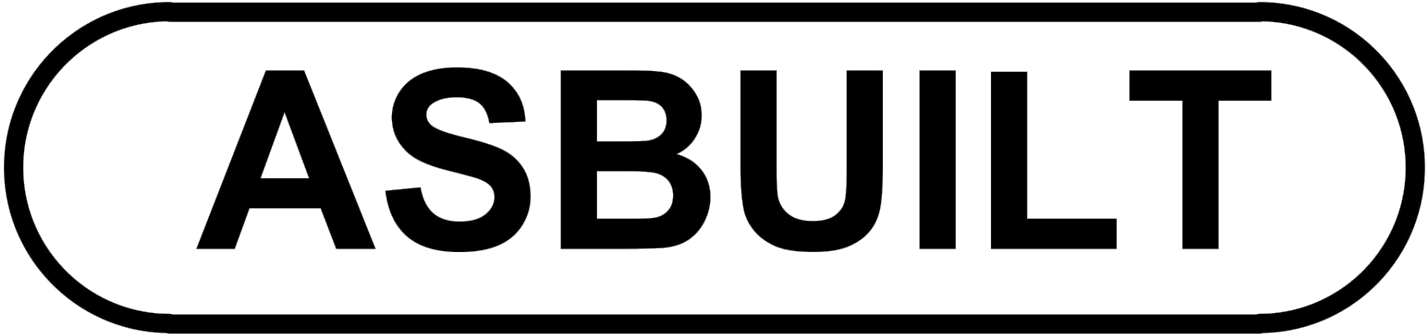
DATE	8-1-17
SCALE	AS SHOWN
DRAWN BY	tkc
CHECKED BY	
JOB NO.	10284



MMCE

1976 Airport Industrial Park Drive
Marietta, GA 30060-9203
(P)770-952-3864
(F)770-952-0299

SHEET NO.	ASBLT-L6
CONTRACT DWG. #	



- CRITICAL WINTERIZATION ITEMS
- GAS SHUTOFF LOCATIONS
- CLEANOUTS & TRAP PRIMERS
- DOMESTIC WATER VALVES
- PLUMBING EQUIPMENT