

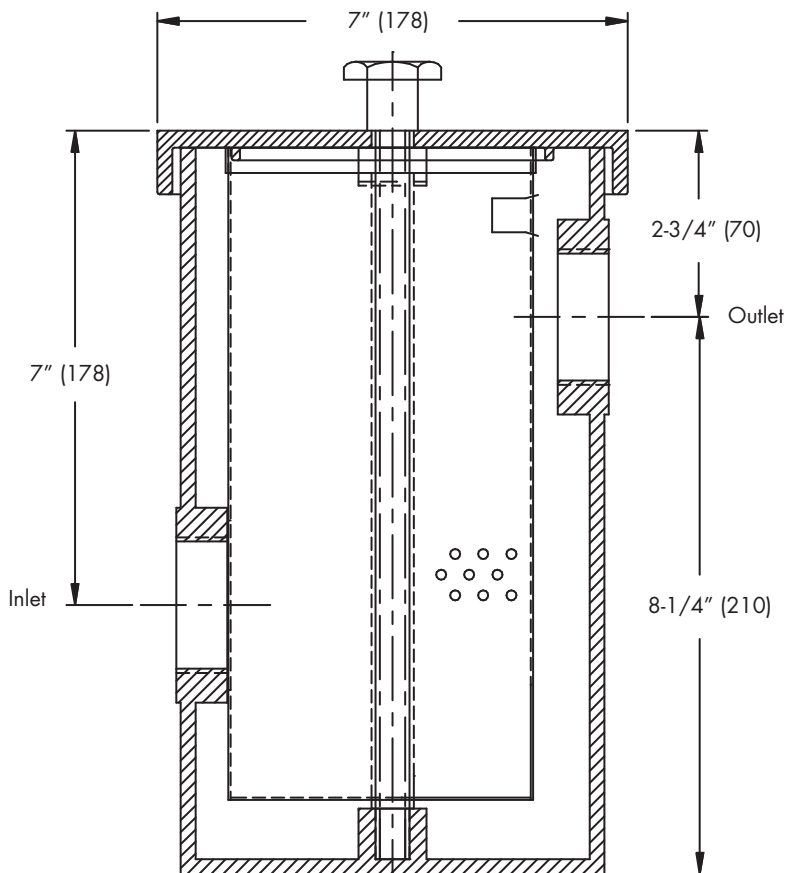
**SI-742**

Tag: _____

**Hair, Plaster & Sediment
Interceptor**

SPECIFICATION: Watts Drainage SI-742 floor mounted epoxy coated cast aluminum sediment interceptor with removable stainless steel sediment basket, gasketed cover, and 2" (51mm) IPS threaded connections.

NOTE: 10"(254) clearance required above cover to remove sediment basket.



| Options (Select One or More) | | |
|------------------------------|-----------------|--------------------------|
| Suffix | Description | |
| -SS | Stainless Steel | <input type="checkbox"/> |

Job Name _____ Contractor _____

Job Location _____ Contractor's P.O. No. _____

Engineer _____ Representative _____

WATTS Drainage reserves the right to modify or change product design or construction without prior notice and without incurring any obligation to make similar changes and modifications to products previously or subsequently sold. See your WATTS Drainage representative for any clarification. Dimensions are subject to manufacturing tolerances.

**Specification Drainage Products**USA: 100 Watts Road, Spindale, NC, 28160-2298; TEL: 828-288-2179 TOLL-FREE: 1-800-338-2581 www.watts.com